



Fact Book

2012-2013

Any questions
concerning material contained
in this book should be directed to:

The University of New Mexico
Office of Institutional Analytics
MSC05 3420
Scholes Hall, Room 238
Albuquerque, NM 87131-0001

Telephone: 505-277-5115
Fax: 505-277-7655
E-mail: oir@unm.edu

For an electronic version of this book,
visit our web site at <http://oir.unm.edu>

The updating of the UNM Fact Book 2012-2013 is a work in progress. Pages are added to this document as they become available.
Please refer to the [UNM Fact Book 2011-2012](#) for the most current data that is not yet available in this edition.

Table of Contents

Explanation of New Campus Naming Conventions	vii
--	-----

Facts at a Glance

Historical Enrollment (Fall 1929-2012)	1
FY 2012-2013 Budget Plan	7

Enrollment - Main Campus

Undergraduate Enrollment by Program (Fall 2006 to Fall 2012)	9
Graduate/Professional Enrollment by Program (Fall 2006 to Fall 2012)	10-11

Enrollment - Branch Campuses

Community Outreach Programs, Gallup Branch (2007-2008 to 2011-2012)	31
Community Outreach Programs, Los Alamos Branch (2007-2008 to 2011-2012)	33
Community Outreach Programs, Taos Branch (2007-2008 to 2011-2012)	35

Table of Contents

Degree Programs, Program Accreditation, Degrees Awarded & Alumni

Accreditation at UNM, Institutional and Programmatic (as of 12/2012)	54-57
---	-------

Faculty Scholarship, Research & Libraries

Faculty Scholarship - UNM All Sites and Campuses (2002-2003 to 2011-2012)	107
UNM Centers & Institutes - Academic Affairs & HSC (2012-2013)	109
Contract & Grant Awards - UNM All Sites and Campuses (FY 2012)	110
Contract & Grant Expenditures - UNM All Sites and Campuses (FY 2000 to FY 2012)	111
Economic Development Contributions (FY 2007-2008 to FY 2011-2012)	112
Information Technologies (FY 2012)	113
UNM Libraries (2012-2013)	115

Table of Contents

Finance & Resource Data

Actual Current Fund Revenue	117
UNM All Sites and Campuses (FY 2011-2012)	
Financial Aid by Source and Type of Aid	119
UNM All Sites and Campuses (2009-2010 to 2011-2012)	
Financial Aid Recipients by Ethnicity, Sex & Level (Fall 2012)	120
Full-Time Tuition & Fees - Main Campus	123
(2006-2007 to 2012-2013)	
UNM Endowment Funds (FY 2012)	127
Gift Activity (FY 2008 to 2012)	129
UNM Facilities (as of Oct. 2012)	130
Capital Outlay Projects (2013-2014)	131-132

UNM Organizational Structure (2012-2013)

The University of New Mexico (President's Direct Reports)	134
Provost & Executive Vice President for Academic Affairs	135
Branch Campus Directors	136
Senior Vice Provost for Academic Affairs	137
Vice President for Student Affairs	140
Associate Vice Provost for Enrollment Management	141
Vice President for Equity and Inclusion	142
Vice President for Research & Economic Development	143
Executive Vice President for Administration	144
Vice President for Human Resources	145
Chief Information Officer	146
Vice President of Athletics	147
Chancellor for Health Sciences	148
UNM Foundation, Inc.	149
UNM Executive Cabinet	150
UNM Board of Regents Committees	151

Campus Naming Conventions

Beginning with the 2011 version of the UNM Fact Book, a new standardized set of campus descriptors were adopted to provide for better consistency in reporting of the data. The descriptors are as follows:

UNM All Sites and Campuses: Formerly referred to as ***Total UNM or UNM (HSC & Branches)***, includes all programs, departments, faculty, and staff that report through any of the areas mentioned below.

Main Campus: Sometimes referred to as the “Albuquerque Campus,” includes all programs and departments that report to Academic Affairs and to the Health Sciences Center administrative areas. Branch Campuses are excluded. This conforms to the National Center for Educational Statics (NCES) Integrated Postsecondary Education Data System (IPEDS) terminology.

Academic Affairs: Includes all programs and departments that report through the Provost/Executive Vice President for Academic Affairs administrative areas, including Extended University, Continuing Education, and other sites such as UNM West (Rio Rancho). Branch Campuses and the Health Sciences Center are excluded.

Academic Affairs/Administrative Areas: For data pertaining to faculty and staff, includes those individuals reporting through the administrative areas of the Provost/Executive Vice President for Academic Affairs (as listed above), the Executive Vice President for Administration, and the President’s Office. Branch Campus faculty and staff are excluded.

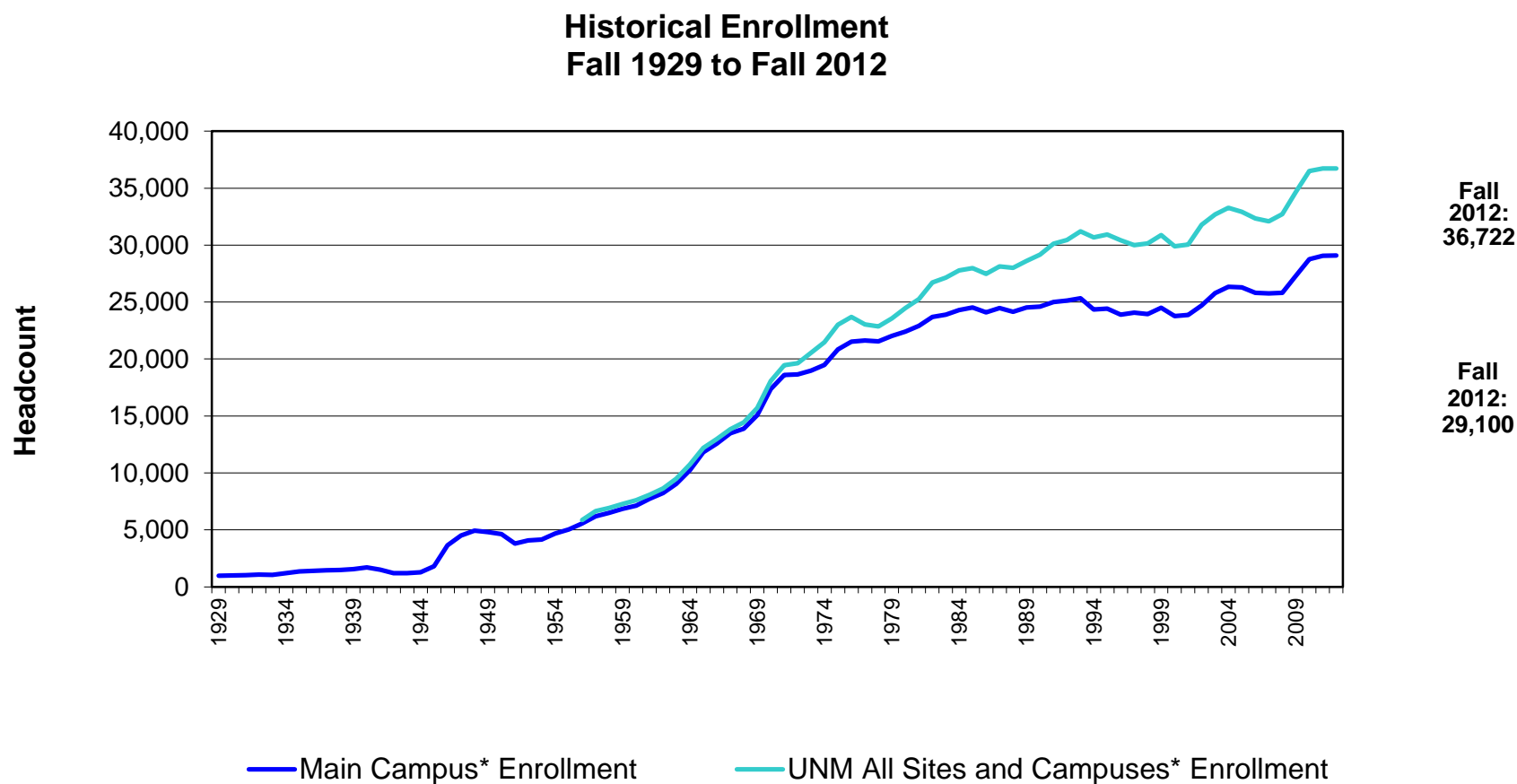
Health Sciences Center: Includes programs, departments, faculty and staff that report through the Health Sciences Center administrative areas, including the College of Nursing, College of Pharmacy, and School of Medicine. Branch Campuses are excluded.

Branches: Includes all programs, departments, faculty, and staff that report through any of UNM’s four Branch Campuses – UNM-Gallup, UNM-Los Alamos, UNM-Taos, and UNM-Valencia.

Facts at a Glance

Facts at a Glance

Historical Enrollment, Fall 1929-2012



*Campus descriptors were modified in 2011. See page vii for an explanation of changes.

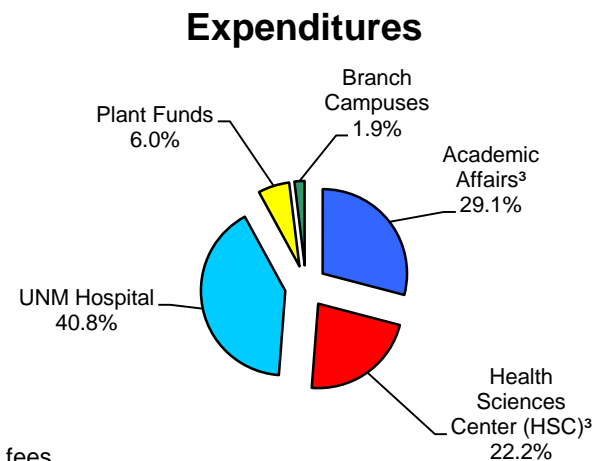
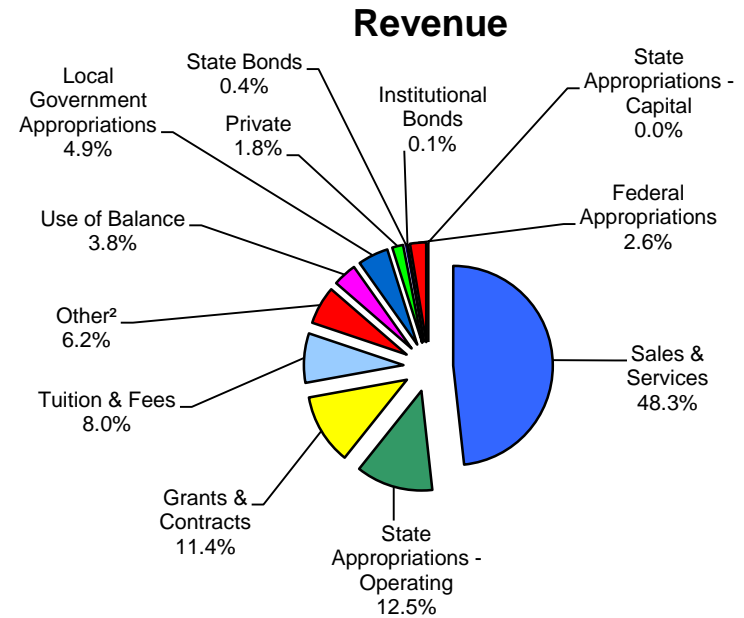
Sources: Annual Report of the Office of Admissions and Records (1953-54; 1971-72; 1983-94); Official Enrollment Report, Registrar's Office (Fall 1995-1997), Fall 21-day enrollment files maintained by the Registrar's Office (Fall 1998-2012)

Facts at a Glance

FY 2012-2013 Budget Plan¹

Revenue	\$ (million)
Sales & Services	\$1,170.6
State Appropriations - Operating	\$302.6
Grants & Contracts	\$277.2
Tuition & Fees	\$194.5
Other ²	\$150.1
Use of Balance	\$93.4
Local Government Appropriations	\$119.8
Private	\$43.3
State Bonds	\$8.9
Institutional Bonds	\$2.2
Federal Appropriations	\$63.5
State Appropriations - Capital	\$0.0
Total	\$2,426.2

Expenditures	\$ (million)
Academic Affairs ³	\$705.2
Health Sciences Center (HSC) ³	\$537.8
UNM Hospital	\$990.1
Plant Funds	\$146.0
Branch Campuses	\$47.1
Total	\$2,426.2



¹UNM consolidated revenue and expenditures. Includes branch campuses, the HSC, and UNM Hospital.

²"Other" revenue includes numerous sources of revenue, including land leases, rentals, and parking permits and fees.

³Campus descriptors were modified in 2011. See page vii for an explanation of changes.

Source: UNM Office of Planning, Budget & Analysis, 2012-2013 Operating and Capital Budget Plan

Enrollment - Main Campus

Undergraduate Enrollment by Program

Main Campus¹ (Fall 2006 to Fall 2012)

Main Campus Undergraduate Enrollment by Program

	2006	2007	2008	2009	2010	2011	2012
Anderson School of Mgmt.	995	961	981	1,047	1,010	1,003	1,082
Architecture & Planning	151	166	182	195	190	199	184
Arts & Sciences	5,036	5,417	5,798	6,217	5,962	6,044	6,137
Education	1,117	1,107	1,072	1,093	1,054	1,015	948
Engineering	996	1,016	1,123	1,170	1,173	1,165	1,239
Fine Arts	570	535	555	630	661	1,414	1,365
Univ College/BUS	716	676	653	645	696	671	669
Univ College/Undergrad Studies	8,080	7,731	7,450	8,073	9,390	8,891	8,828
University Libraries ²							37
Assoc. & Cert. Programs ³	46	70	68	59	51	76	78
Academic Affairs Sub-total	17,707	17,679	17,882	19,129	20,187	20,478	20,567
Nursing	299	384	343	268	243	240	227
SOM/Dental Programs	50	50	49	48	48	52	56
SOM/Misc. Allied Health	143	146	121	166	177	165	158
Health Sciences Sub-total	492	580	513	482	468	457	441
Total Undergraduate	18,199	18,259	18,395	19,611	20,655	20,935	21,008

¹Campus descriptors were modified in 2011. See page vii for an explanation of changes.

²As of 2012, the Organizational Learning & Instructional Technology Program moved from the College of Education to University Libraries.

³Branch Campus students in associate degree and certificate programs taking courses on the Main Campus.

Source: Fall Official Enrollment Reports, Registrar's Office

Graduate/Professional Enrollment¹ by Program

Academic Affairs² (Fall 2006 to Fall 2012)

Academic Affairs Graduate/Professional Enrollment by Program							
	2006	2007	2008	2009	2010	2011	2012
Architecture & Planning	205	208	216	251	233	228	216
Arts & Sciences	1,478	1,411	1,377	1,347	1,401	1,405	1,383
Education	1,233	1,194	1,104	1,220	1,319	1,321	1,137
Engineering	578	583	595	622	600	662	686
Fine Arts	193	186	186	192	203	182	182
Public Administration	140	146	162	185	219	219	227
Univ College/Water Resources	44	41	36	38	38	48	42
University Libraries ³							122
Misc Programs	4	20	64	0	0	0	0
Sub-total Office of Graduate Studies	3,875	3,789	3,740	3,855	4,013	4,065	3,995
Anderson School of Mgmt.	469	466	474	510	620	681	672
Law	344	344	344	345	355	357	346
Total Academic Affairs Graduate/Professional	4,688	4,599	4,558	4,710	4,988	5,103	5,013

¹ Reported enrollments include Extended University enrollment.

² Campus descriptors were modified in 2011. See page vii for an explanation of changes.

³ As of 2012, the Organizational Learning & Instructional Technology Program moved from the College of Education to University Libraries.

Source: Fall Official Enrollment Reports, Enrollment Management Reporting Team and Fall 21-day enrollment files maintained by the Registrar's Office

Graduate/Professional Enrollment¹ by Program

Health Sciences Center² (Fall 2006 to Fall 2012)

Health Sciences Center Graduate/Professional Enrollment by Program							
	2006	2007	2008	2009	2010	2011	2012
SOM/Medical Science ^{3†}	269	270	274	298	285	266	262
Nursing	213	222	208	206	190	180	173
Pharmacy	9	8	9	9	10	11	11
Sub-total Office of Graduate Studies	491	500	491	513	485	457	446
Medicine (M.D.)	306	304	303	317	334	339	374
PharmD	359	360	359	347	354	354	344
Physical Therapy (D.P.T.)‡				25	53	81	85
Total Health Sciences Center Graduate/Professional	1,156	1,164	1,153	1,202	1,226	1,231	1,249
Total Main Campus Enrollment							
Undergraduate	18,199	18,259	18,395	19,611	20,655	20,935	21,008
Total Graduate/Professional	5,844	5,763	5,711	5,911	6,204	6,332	6,262
Office of Graduate Studies	4,366	4,289	4,231	4,368	4,498	4,522	4,441
Anderson School of Mgmt.	469	466	474	510	620	681	672
Law	344	344	344	344	345	355	346
Medicine (M.D.)	306	304	303	317	334	339	374
PharmD	359	360	359	347	354	354	344
Physical Therapy (D.P.T.)‡				25	53	81	85
Non-Degree	1,774	1,727	1,714	1,781	1,888	1,787	1,830
Grand Total	25,817	25,749	25,820	27,303	28,747	29,054	29,100

¹ Reported enrollments include Extended University enrollment.

² Campus descriptors were modified in 2011. See page vii for an explanation of changes.

³ Includes Biomedical Sciences, Dental Hygiene, Occupational Therapy, Clinical Laboratory Sciences, Physician Assistant Studies, and Public Health.

† Prior to 2011, this category contained Master's level Physical Therapy students.

‡ Beginning in 2009 the Master's level degree in Physical Therapy was phased out and replaced with a Doctorate level degree in Physical Therapy. No new students were accepted in the Master's of Physical Therapy program after 2009.

Source: Fall Official Enrollment Reports, Enrollment Management Reporting Team and Fall 21-day enrollment files maintained by the Registrar's Office

Enrollment - Branch Campuses

Community Outreach Programs

Gallup Branch Campus, 2007-2008 to 2011-2012

Adult Basic Education (ABE)

Number of Students Completing Objectives and/or 12+ Hours of Instruction*

	Number					Percentage				
	07-08	08-09	09-10	10-11	11-12	07-08	08-09	09-10	10-11	11-12
Number of Students	631	704	735	637	567					
Female	341	391	376	328	271	54.0	55.5	51.2	51.5	47.8
Male	290	313	359	309	296	46.0	44.5	48.8	48.5	52.2
Hispanic ¹	92	72	73	56	72	14.6	10.2	9.9	8.8	12.7
African American/Black	8	10	8	6	2	1.3	1.4	1.1	0.9	0.4
American Indian	508	593	636	553	474	80.5	84.2	86.5	86.8	83.6
Asian	6	11	4	8	6	1.0	1.6	0.5	1.3	1.1
Native Hawaiian/Pacific Islander					1				0.0	0.2
White	17	18	14	8	6	2.7	2.6	1.9	1.3	1.1
Two or More				6	6				0.9	1.1
International										
No Response										

*These figures only reflect the number of students completing 12+ hrs. of ABE instruction and/or completing their educational objectives during the annual reporting period, as reported to the State of New Mexico for funding purposes. The State does not currently fund instructional and support services for other ABE students.

Adult Basic Education (ABE) programs provide adults with the opportunity to acquire and improve basic reading, writing, and math skills, as well as English as a second language skills, citizenship skills, employability skills, and General Education Diploma (GED) preparation.

Other Non-Credit Community Outreach Programs

Number of Students/Clients Served

Program	07-08	08-09	09-10	10-11	11-12
Non-Credit Community Education	403	264	135	176	539
Customized/Specialized Training	1,036	612	494	640	611
Small Business Development Center	1,006	791	543	553	859

¹Federal race/ethnicity reporting changed in 2010. See page vi for an explanation of changes.

Source: Gallup Branch Campus, Office of the Director

Community Outreach Programs

Taos Branch Campus, 2007-2008 to 2011-2012

Adult Basic Education (ABE)

Number of Students Completing Objectives and/or 12+ Hours of Instruction*

	Number					Percentage				
	07-08	08-09	09-10	10-11	11-12	07-08	08-09	09-10	10-11	11-12
Number of Students	229	226	256	254	225					
Female	114	122	132	138	107	49.8	54.0	51.6	54.3	47.6
Male	115	104	104	116	118	50.2	46.0	40.6	45.7	52.4
Hispanic ¹	159	158	196	191	168	69.4	69.9	76.6	75.2	74.7
African American/Black	2			1	2	0.9	0.0			0.9
American Indian	20	22	21	12	10	8.7	9.7	8.2	4.7	4.4
Asian	2	4	2	2	1	0.9	1.8	0.8	0.8	0.4
Native Hawaiian/Pacific Islander										
White	46	42	37	42	35	20.1	18.6	14.5	16.5	15.6
Two or More					9					4.0
International										
No Response				6						

*These figures only reflect the number of students completing 12+ hrs. of ABE instruction and/or completing their educational objectives during the annual reporting period, as reported to the State of New Mexico for funding purposes. The State does not currently fund instructional/support services for other ABE students.

Adult Basic Education (ABE) programs provide adults with the opportunity to acquire and improve basic reading, writing, and math skills, as well as English as a second language skills, citizenship skills, employability skills, and General Education Diploma (GED) preparation.

Other Non-Credit Community Outreach Programs

Number of Students/Clients Served

Program	07-08	08-09	09-10	10-11	11-12 ²
Non-Credit Community Education	753	1,413	2,384	2,573	N/A
Customized/Specialized Training	8	0	12	20	N/A
Small Business Development Center	N/A	N/A	59	65	N/A

¹Federal race/ethnicity reporting changed in 2010. See page vi for an explanation of changes.

²The criteria in the New Mexico Non-Credit Workforce Training Summary Report for these categories is in the process of being revised.

Source: Taos Branch Campus, Office of the Director

Community Outreach Programs

Valencia Branch Campus, 2007-2008 to 2011-2012

Adult Basic Education (ABE)

Number of Students Completing Objectives and/or 12+ Hours of Instruction*

	Number					Percentage				
	07-08	08-09	09-10	10-11	11-12	07-08	08-09	09-10	10-11	11-12
Number of Students	842	1,043	1,153	1,141	988					
Female	480	631	608	633	536	57.0	60.5	52.7	55.5	54.3
Male	362	412	545	508	452	43.0	39.5	47.3	44.5	45.7
Hispanic ¹	626	718	822	799	703	74.3	68.8	71.3	70.0	71.2
African American/Black	8	15	12	11	10	1.0	1.4	1.0	1.0	1.0
American Indian	19	34	41	39	28	2.3	3.3	3.6	3.4	2.8
Asian	8	3	5	13	10	1.0	0.3	0.4	1.1	1.0
Native Hawaiian/Pacific Islander				1	1					0.1
White	181	266	273	269	222	21.5	25.5	23.7	23.6	22.5
Two or More				9	14					1.4
International										
No Response										

*These figures only reflect the number of students completing 12+ hrs. of ABE instruction and/or completing their educational objectives during the annual reporting period, as reported to the State of New Mexico for funding purposes. The State does not currently fund instructional/support services for other ABE students.

Adult Basic Education (ABE) programs provide adults with the opportunity to acquire and improve basic reading, writing, and math skills, as well as English as a second language skills, citizenship skills, employability skills, and General Education Diploma (GED) Preparation.

Other Non-Credit Community Outreach Programs

Number of Students/Clients Served

Program	07-08	08-09	09-10	10-11	11-12
Non-Credit Community Education	440	1,216	1,684	1,337	2,196
Customized/Specialized Training ²	2,271	2,659	2,179	2,072	3,377
Small Business Development Center ²	223	384	372	422	233

¹Federal race/ethnicity reporting changed in 2010. See page vi for an explanation of changes.

²Duplicated headcount

Source: Valencia Branch Campus, Office of the Director

Degree Programs, Program Accreditation,
Degrees Awarded & Alumni

Accreditation at UNM

Institutional & Programmatic (as of 12/2012)

Department	Program or Major	Accreditation Body	Last Review	Next Review
University of New Mexico				
	Institutional	The Higher Learning Commission of the North Central Association of Colleges & Schools	2008-09	2018-19
Anderson School of Management				
ASM	B.B.A., M.B.A. (Traditional & Executive), & M.Acct.	The Association to Advance Collegiate Schools of Business International (AACSB)	2010	2015
School of Architecture & Planning				
Architecture Program	Master of Architecture	National Architectural Accrediting Board (NAAB)	2011-12	2017-18
Community & Regional Planning Program	Master of Community & Regional Planning	Planning Accreditation Board (PAB)	2006-07	2013-14
Landscape Architecture	Master of Landscape Architecture	Landscape Architectural Accreditation Board (LAAB)	2008-09	2014-15
College of Arts & Sciences				
Communication & Journalism	Undergraduate Program	Accrediting Council on Education in Journalism & Mass Communication (ACEJMC)	2008	2014
Psychology	Ph.D. Psychology	American Psychological Association (APA)	2007	2014
Speech & Hearing Sciences	M.S. in Speech-Language Pathology	American Speech-Language-Hearing Association	2011	2019
College of Education				
College of Education Licensure & Affiliated Programs	B.A.Ed., M.A., Post B.A. Art Education	National Council for Accreditation of Teacher Education (NCATE)	2007	2015
	M.A. Counseling			
	B.S. Early Childhood Education			
	M.A., Ed.Spc. Certificate, Ed.D. Educational Leadership	New Mexico Public Education Department (NMPED)	2007	2015
	B.S.Ed., M.A. Elementary Education			
	Ed.D, Ph.D. Multicultural Teacher & Childhood Education			
	B.S.Ed., M.S. Health Education			
		Note: NCATE & NMPED also accredit the B.M.E. in Music Education (College of Fine Arts)		

Source: UNM University Accreditation Director & Accredited Programs

Department	Program or Major	Accreditation Body	Last Review	Next Review
College of Education Licensure & Affiliated Programs	B.S.Ed., Post B.A., M.S. (Curriculum & Instruction concentration) Physical Education		2007	2015
	B.S.Ed., B.A.Ed., M.A. Secondary Education		2007	2015
	B.S.Ed., M.A. Special Education		2007	2015
	B.S.Ed., MA., Ed.D., Ph.D. Special Education Educational Diagnostician Licensure Program			
Individual Family & Community Education (IFCE)	M.A. Counseling, Ph.D. Counselor Education	Council for Accreditation of Counseling & Related Education Programs (CACREP)	2012	TBD
	B.S. Nutrition Post B.S. Dietetics Internship B.S Dietetics Internship	Commission on Accreditation for Dietetics Education (CADE) of the American Dietetic Association (ADA)	2010	2015
	B.S., M.A., Ph.D. Family Studies Family Life Educator Program	National Council on Family Relations	2012	TBD
Health Exercise & Sport Sciences (HESS)	B.S. Athletic Training Program	Commission on Accreditation of Athletic Training Education (CAATE)	2008	2017-18
	M.S. Physical Education Sport Administration Concentration	Commission on Sport Management Accreditation (COSMA)	2009	TBD
	Ph.D. Physical Education, Sports, & Exercise Science Sport Administration Concentration	Commission on Sport Management Accreditation (COSMA)	2009	TBD
School of Public Administration				
School of Public Administration	Masters of Public Administration	National Association of Schools of Public Affairs & Administration (NASPAA)	2011-12	2018-19
School of Engineering				
Chemical & Nuclear Engineering Civil Engineering	B.S. Chemical Engineering B.S. Nuclear Engineering B.S. Civil Engineering B.S. Construction Engineering	Engineering Accreditation Commission of the Accreditation Board for Engineering & Technology (ABET)	2010-11	2016-17
Electrical & Computer Engineering Mechanical Engineering	B.S. Electrical Engineering B.S. Computer Engineering B.S. Mechanical Engineering			
Civil Engineering	B.S. Construction Management	American Council for Construction Education	2011-12	2017-18
Computer Science	B.S. Computer Science	Computing Accreditation Commission of ABET	2011-12	2017-18

Source: UNM University Accreditation Director & Accredited Programs

Department	Program or Major	Accreditation Body	Last Review	Next Review
College of Fine Arts				
Music	B.M., B.A., B.M.E. & M.M. Music	National Association of Schools of Music (NASM)	2012	2021-22
Theatre and Dance	B.A. & M.A. Theatre	National Association of Schools of Theatre (NAST)	2002	2013-14
	B.A. and M.A. Dance	National Association of Schools of Dance (NASD)	2002	2013-14
	MFA Dance	National Association of Schools of Dance (NASD)	2002	2013-14
	MFA Dramatic Writing	National Association of Schools of Theatre (NAST)	2002	2013-14
Health Sciences Center - College of Nursing				
College of Nursing	Nursing	Commission on Collegiate Nursing Education	2012	2022
College of Nursing Graduate Program	M.S.N. with a concentration in Nurse Midwifery	American College of Nurse - Midwives, Division of Accreditation	2006	2017
Health Sciences Center - College of Pharmacy				
College of Pharmacy	Pharm.D.	Accreditation Council for Pharmacy Education	2009	2016
Health Sciences Center - School of Medicine				
School of Medicine	M.D. Medicine Undergraduate Medical Education Curriculum	Liaison Committee on Medical Education representing the Association of American Medical Colleges & the American Medical Association	2010	2017
Dept. of Emergency Medicine Emergency Medical Services Academy	Part of a B.S. degree program and also a certificate program, Paramedic Course	Committee on Accreditation of Educational Programs for the Emergency Medical Services Profession	2010	2015
Dept. of Family & Community Medicine Physician Assistant Program	M.S. and certification of completion Physician Assistant Education	Accreditation Review Commission on Education for the Physician Assistant, Inc.	2012	2014
Dept. of Family & Community Health Program, Masters of Public Health	Masters of Public Health in Community and Preventative Health	Council on Education for Public Health	2010	2017
Dept. of Pediatrics Occupational Therapy Program	Masters of Occupational Therapy	Accreditation Council for Occupational Therapy Education	2010-11	2022
Dept. of Orthopedics Division of Physical Therapy	Doctor of Physical Therapy	Commission on Accreditation in Physical Therapy Education	2005	2015
Dept. of Pathology, Medical Laboratory Sciences Program	B.S. in Medical Laboratory Sciences; Certificate of completion for students with existing undergraduate degree; M.S. in Clinical Laboratory Sciences	National Accrediting Agency for Clinical Laboratory Sciences	2007	2014

Source: UNM University Accreditation Director & Accredited Programs

Department	Program or Major	Accreditation Body	Last Review	Next Review
Department of Dental Medicine Division of Dental Hygiene	B.S. Dental Hygiene	Commission on Dental Accreditation	2009	2016
School of Law				
School of Law	Law	American Bar Association Association of American Law Schools	2008	2015
Branch Campuses				
Department	Program or Major	Accreditation Body	Last Review	Next Review
UNM-Gallup				
Health Careers Department	Associate Degree Medical Laboratory Technician	National Accreditation Agency for Clinical Laboratory Sciences	2012	2017-19
	Associate Degree Health Information Technology	Commission on Accreditation for Health Information & Information Management Education (CAHIM)	2011	2015
	Certificate Dental Assisting	American Dental Association Council on Dental Education	2012	2015
Nursing Department	Associate Degree Nursing	New Mexico State Board of Nursing	2010	2015
	Certificate Nursing Assistant	New Mexico Department of Health Licensing & Certification	2012	2014
Applied Technology -Cosmetology -Construction Technology -Welding Technology	Certificate Cosmetology	New Mexico State Board of Cosmetology/Barbering	2011	TBD
	Certificate Barbering	New Mexico State Board of Cosmetology/Barbering	2011	TBD
	General Trades & Construction Technology	Certificate of Accreditation National Center for Construction Education & Research (NCCER)	2011	2015
	Welding Technology	Certificate of Accreditation National Center for Construction Education & Research (NCCER)	2012	2013
		American Welding Society (AWS)	2010	2013
UNM-Los Alamos				
UNM-LA offers 5 AA, 4 AS, & 11 AAS degrees, as well as 15 certificates, 8 employability certificates & customized training.				
UNM-Taos				
UNM-Taos offers 4 AA, 3 AS, and 3 AAS degrees, as well as 13 certificates & customized training.				
UNM-Valencia				
UNM-VA offers 18 AA, AS, & AAS degrees, as well as 16 certificates & customized training.				

Source: UNM University Accreditation Director & Accredited Programs

Faculty Scholarship, Research & Libraries

Faculty Scholarship

UNM All Sites and Campuses*, 2002-2003 to 2011-2012

Faculty Research and Scholarship				
Academic Year	Number of Faculty with Sponsored Awards ¹	Number of Awards ¹	Average Award Amount ¹	Fulbright Scholars from UNM ²
2002-2003	681	1,607	\$159,134	4
2003-2004	709	1,622	\$171,641	1
2004-2005	625	1,507	\$196,019	4
2005-2006	640	1,832	\$162,984	3
2006-2007	627	1,655	\$176,168	8
2007-2008	636	1,718	\$176,627	4
2008-2009	676	1,721	\$162,754	7
2009-2010	625	1,777	\$178,378	1
2010-2011	622	1,793	\$176,472	1
2011-2012	651	1,796	\$152,892	2

Publications and Creative Works (2011-2012) ¹	
Scholarly Papers and Articles	1,761
Books	50
Book Chapters	147
Reviews	27
Creative Works	48
Issued Patents	36
Editorships	4

*Campus descriptors were modified in 2011. See page vii for an explanation of changes.

Sources: ¹ Office of the Vice President for Research and Economic Development and ² International Programs & Studies

UNM Centers & Institutes¹ 2012-2013

Academic Affairs²

University Libraries

Center for Regional Studies	277-2857
Center for Southwest Research and Special Collections	277-6451

Anderson School of Management

Center for Support of Economic Development (CSED)	277-8881
Management Development Center	277-2525
Bill Daniels Teaching Business Ethics Initiative	277-7056
Center for Information Assurance Research and Education	277-6471
Anderson Speaker's Bureau	277-7117
Small Business Institute	277-6471

University College

UNM Water Resources Program	277-7759
-----------------------------	----------

Office of the Vice President/Research & Economic Development

Bureau of Business and Economic Research (BBER)	277-2216
Center for Advanced Research Computing (CARC)	277-8249
Center on Alcohol Substance Abuse & Addictions (CASAA)	925-2300
Center for High Technology Materials (CHTM)	272-7800
Center for Micro-Engineered Materials (CMEM)	277-2833
Division of Government Research (DGR)	277-3305
Ibero American Science & Tech Education Consortium	277-7974
Institute for Applied Research Services	277-2216

Office of the Provost

Latin American Iberian Institute (LAI)	277-2961
Robert Wood Johnson Foundation Center for Health Policy (RWJF)	277-0130
Southwest Hispanic Research Institute (SHRI)	277-2965
Spanish Colonial Research Center (SCRC)	346-2890

¹Identifies centers and institutes where research activities take place.

²Campus descriptors were modified in 2011. See page vii for an explanation of changes.

Health Sciences Center²

Designated Centers, Institutes, & Networks

Clinical and Translational Science Center	272-9475
Cancer Center	272-4946
Center for Infectious Disease and Immunity	272-5872

Extramurally Funded Centers, Institutes, & Network Grants

Health Disparities Research Center (NM CARES HD)	272-3876
Interdisciplinary HPV Prevention Center	272-0821
Diabetes Prevention and Outcomes Center	272-4462
Brain Vascular Malformation Consortium	272-3194
Robert Wood Johnson Foundation Center for Health Policy	277-0130
Center for Molecular Discovery	272-9973
Biomedical Research and Integrative Neuroimaging Center (BRAIN)	272-8182
Center for Spatiotemporal Modeling (STMC)	272-4364
Fetal Alcohol Induced Behavioral Deficits Center	272-3128
Prevention Research Center	272-4462

Other Centers, Institutes, & Networks

NM Poison and Drug Information Center	272-4261
Center for Development and Disability	272-3000
Center for Disaster Management	272-6240
Center on Aging	272-6082
Institute for Ethics	272-4566
Center for Native American Health	272-4100

Source: Office of the Vice President for Research and UNM Health Sciences Center

Contract & Grant Awards

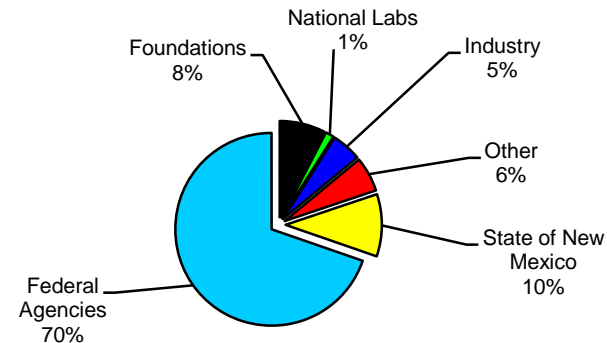
UNM All Sites and Campuses¹ (FY 2012)

Contract & Grant Awards

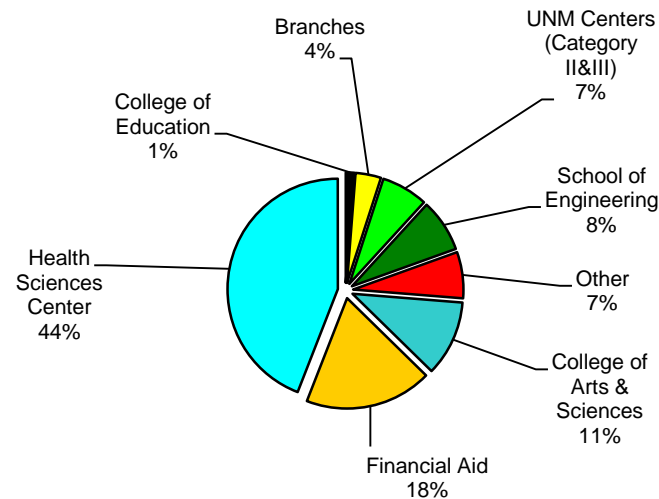
Source of Funds	Amt. (in mil.)
Foundations	\$25,538,751
National Labs	\$4,828,997
Industry	\$16,733,015
Other	\$19,717,043
State of New Mexico	\$35,192,085
Federal Agencies	\$234,600,356
Total	\$336,610,247

Units Awarded	Amt. (in mil.)
College of Education	\$4,197,557
Branches	\$12,598,608
UNM Centers (Category II&III)	\$22,921,740
School of Engineering	\$25,943,874
Other	\$22,751,386
College of Arts & Sciences	\$37,182,106
Financial Aid	\$62,651,371
Health Sciences Center	\$148,363,605
Total	\$336,610,247

Source of Funds



Awards by Unit



¹Campus descriptors were modified in 2011. See page vii for an explanation of changes.

Source: Office of the Vice President for Research and Economic Development

Contract & Grant Expenditures¹

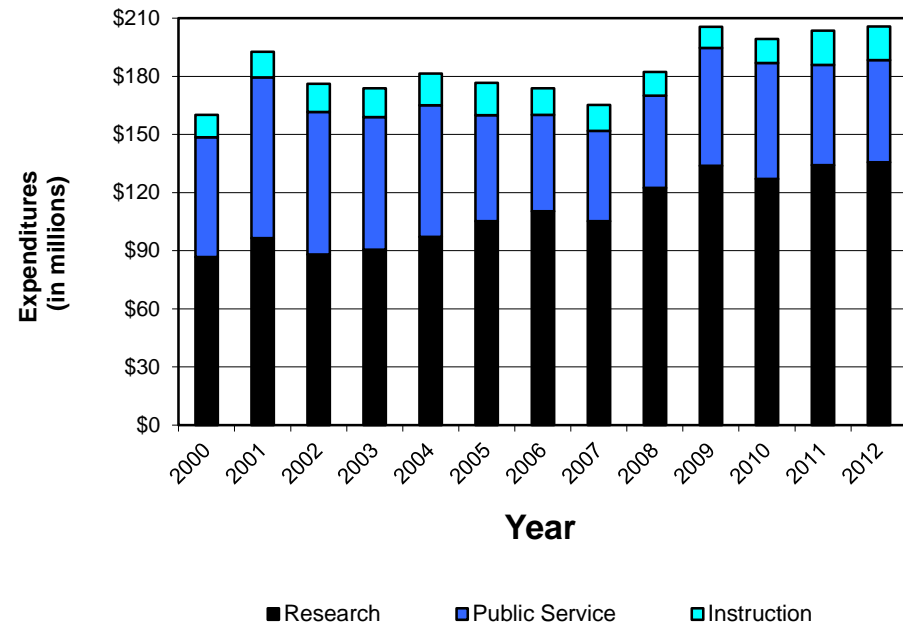
UNM All Sites and Campuses² (FY 2000 to FY 2012)

Contract & Grant Expenditures

(In millions)

FY	Research	Public Service	Instruction
2000	\$86.8	\$61.8	\$11.5
2001	\$96.5	\$83.0	\$13.2
2002	\$88.1	\$73.5	\$14.5
2003	\$90.5	\$68.4	\$15.0
2004	\$97.1	\$68.0	\$16.4
2005	\$105.3	\$54.6	\$16.7
2006	\$110.4	\$49.7	\$13.8
2007	\$105.3	\$46.5	\$13.4
2008	\$122.4	\$47.7	\$12.2
2009	\$133.9	\$60.8	\$10.8
2010	\$127.0	\$59.9	\$12.4
2011	\$134.2	\$51.7	\$17.7
2012	\$135.7	\$52.7	\$17.3

Contract & Grant Expenditures
FY 1999 to FY 2011



¹Direct costs only. Does not include state or federal student financial aid.

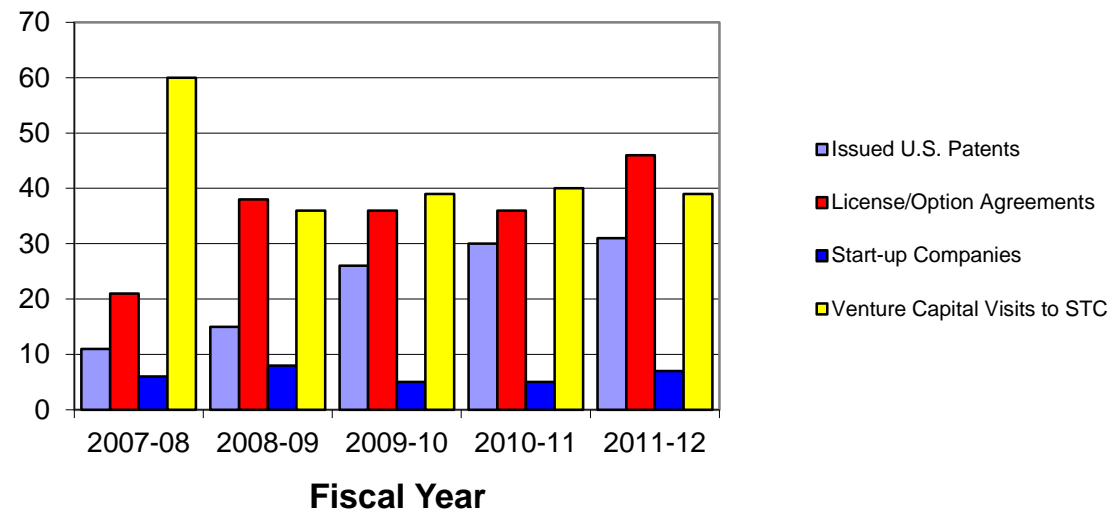
²Campus descriptors were modified in 2011. See page vii for an explanation of changes.

Source: Office of the Vice President for Research and Economic Development

Economic Development Contributions

Fiscal Years 2007-2008 to 2011-2012

**Patents, License/Option Agreements, Start-ups
& Venture Capital Visits**



	Totals for Each Fiscal Year				
	2007-08	2008-09	2009-10	2010-11	2011-12
Issued U.S. Patents	11	15	26	30	31
License/Option Agreements	21	38	36	36	46
Start-up Companies	6	8	5	5	7
Venture Capital Visits to STC	60	36	39	40	39

Source: STC.UNM (formerly known as Science & Technology Corporation @ UNM)

- IT delivers, secures, monitors and manages the UNM voice and data networks, computer and storage resources.
- IT underwrites licensing for Microsoft software and negotiated the Dell contract, saving UNM close to \$400,000 in FY2011.
- IT manages computing environments such as WebCT, my.unm Portal, computer pods, software for departmental purchase, hardware maintenance, survey and election software, course evaluation and scanned test scoring.
- IT maintains and enhances Banner applications such as Student Admissions, Registration, Financial Aid, Human Resources, Payroll, and Finance, as well as reporting, Degree Audit and other Banner-related applications.
- IT enables UNM NetID authenticated access to the systems above, as well as email, Calendar, Web services and the Internet.

IT Web Sites:

cio.unm.edu

it.unm.edu

help.unm.edu

studentinfo.unm.edu

my.unm.edu

Mission



IT provides leadership for the effective use of information technologies to achieve the University of New Mexico's vision and mission in education, research, and public service, and to support the effective management and administration of those functions.

Fiscal Year 2012 Overview

% Change from FY2011		
Campus Computing Facilities	2%	7 Pods & 15 classrooms with 600+ student-facing computers & over 125 technology equipped instructor podiums.
Computer Software		IT negotiated and underwrote UNM licensing for Lynda.unm.edu, MatLab, antivirus software, MS Office Suite to depts.
Dell Contract		UNM saved over \$1.3 Million in hardware purchases since the Dell contract signed in October, 2009.
Self-service Client Assists	85%	HELP.UNM enabled IT users to enter tickets for more efficient service delivery.
NetIDs	4%	Over 85,000 accounts accessed the network and ERP applications. This represents a 22% increase over 5 years.
Digital Storage	91%	UNM relied on IT's management of 420 terabytes of digital storage of enterprise information.
Research Network Traffic	51%	UNM's use of high-speed, low latency traffic increased while traffic management costs continue to decrease.
UNM Web Hits	17%	~3 million average daily hits came to unm.edu sites as more services are delivered via the Web;106% increase over 5 yrs
Enterprise Messaging		47,000 students migrated to LoboMail, the new enterprise email platform. Over 20,000 faculty and staff migrated Fall 2012.
Voice Services	-1%	Phone landlines hovered at over 18,000 in use on Main and North campuses, while voice mail usage saw a 2% uptick to 7,950 since cost containment. UNM cell phones increased almost 3% in 5 years, but fluctuate around 1,500.
Surveys & Election Tool	35%	Almost 1,000 surveys and elections were issued. Trained Opinio users are up 10% to over 550 on campus.
Scanning	-1%	Scanning leveled off at 240,000 sheets scanned, mostly from tests and course evaluations - down 505 over 5 years.
IT Staff	-3%	IT regular full-time staff decreased by 5 to 142. Temp,Term and Student employees remained steady at just under 50.

Source: 2012 Annual Report, Office of the Chief Information Officer (CIO)

UNM Libraries

2012-2013 Library Statistics

Collections	University Libraries	Law	Health Sciences	Bunting	Total
Volumes in Library	3,138,561	282,888	139,921	0	3,561,370
Serials Print	3,294	274	36	3	3,607
Serials Electronic	65,716	802	1,807	0	68,325
Electronic Books	612,760	23,828	448	0	637,036
Microforms	3,806,787	191,583	0	0	3,998,370
Government Documents	713,958	0	0	0	713,958
Manuscripts and Archives (linear ft.)	14,569	485	1,963	0	17,017
Maps	235,546	0	0	0	235,546
Audio, Film and Video	50,936	934	2,368	0	54,238
Services					
Website Hits	843,315	62,215	2,840,397	63,451	3,809,378
Number of Reference Transactions	25,723	3,138	6,979	275	36,115
Total Number of Circulations	223,215	5,099	8,316	2,000	238,630
Interlibrary Loan Requests (materials received from other Libraries)	32,757	209	804	n/a	33,770
Interlibrary Loan Requests (materials sent to other Libraries)	24,989	200	1,255	n/a	26,444
Facilities					
Number of Computers - laptop and desktop for public use	370	8	56	6	440
Service hours (number of hours library is open per week)	116	83	95	45	339
Gate count (number of persons entering/exiting library)	1,509,943	138,396	200,104	32,200	1,880,643

ARL Library Ranking	FY 06-07	FY 07-08	FY 08-09	FY 09-10	FY 10-11
UNM Ranking*	59	59	72	83	86
Total Ranked	113	113	114	115	115

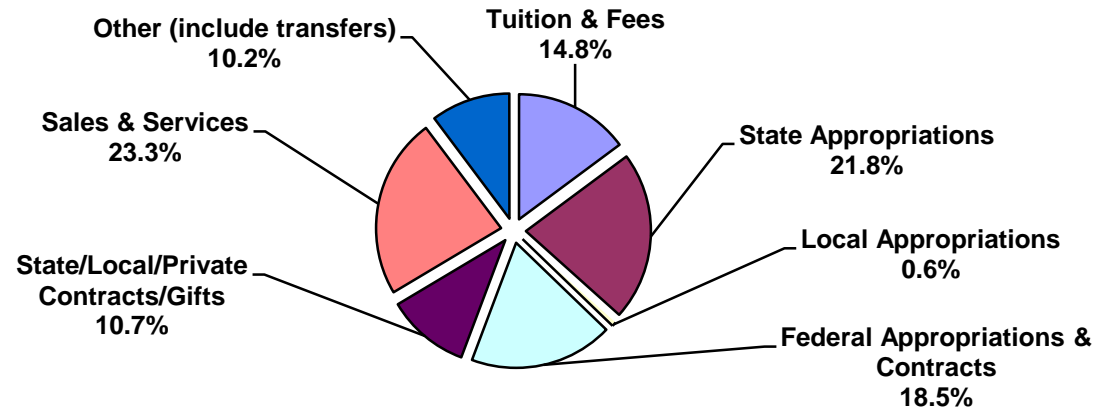
*Where 1 is the highest rank based on Investment Index.

Source: UNM Libraries FY 2012

Finance & Resource Data

Actual Current Fund Revenue

UNM All Sites and Campuses¹, FY 2011-2012



Revenue - UNM All Sites and Campuses² In Millions of Dollars (Unrestricted and Restricted Combined)

	FY 07-08	FY 08-09	FY 09-10	FY 10-11	FY 11-12
Tuition & Fees	\$123.5	\$136.3	\$153.0	\$174.3	\$187.1
State Appropriations	\$362.9	\$338.6	\$317.8	\$294.9	\$274.9
Local Appropriations	\$5.6	\$6.1	\$5.9	\$7.4	\$7.2
Federal Appropriations & Contracts	\$178.9	\$191.1	\$208.8	\$239.7	\$233.6
State/Local/Private Contracts/Gifts	\$116.3	\$138.8	\$126.5	\$160.8	\$135.2
Sales & Services	\$286.0	\$317.3	\$327.8	\$313.7	\$294.0
Other (include transfers)	\$335.1	\$169.4	\$158.2	\$155.2	\$129.2
Total	\$1,408.3	\$1,297.6	\$1,298.0	\$1,346.0	\$1,261.2

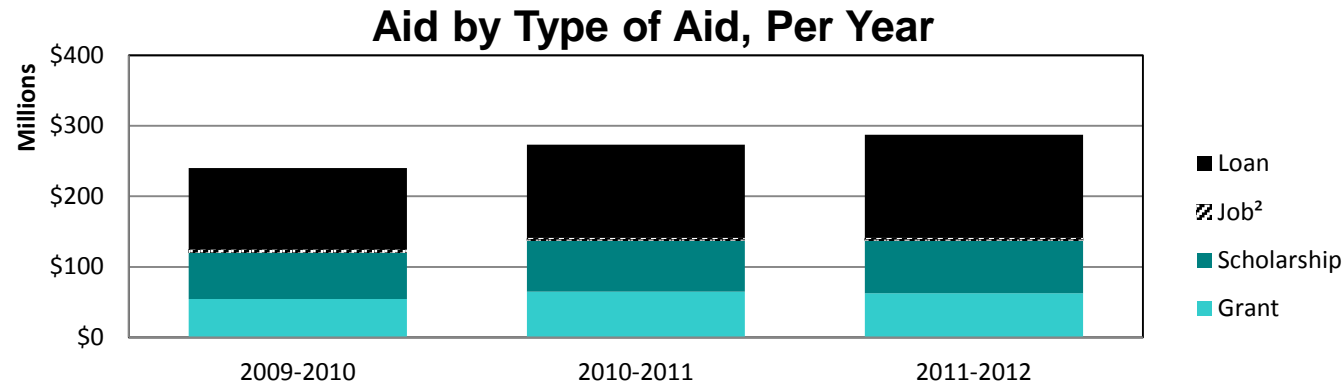
¹Campus descriptors were modified in 2011. See page vii for an explanation of changes.

²Excludes UNM Hospital and component units, such as the UNM Foundation and STC.UNM.

Source: University of New Mexico Annual Audit Reports, and supporting worksheet from UNM Controller's Office

Financial Aid by Source and Type of Aid

UNM All Sites and Campuses¹, 2009-2010 to 2011-2012



Financial Aid Year	Source of Aid	Type of Aid				
		Grant	Scholarship	Job ²	Loan	Total
2009-2010	Federal	\$50,538,156	\$1,019,319	\$2,394,550	\$113,043,508	\$166,995,533
	State	\$3,581,978	\$32,079,966	\$2,275,870	\$388,613	\$38,326,427
	Institutional	\$468,899	\$25,832,824		\$21,959	\$26,323,682
	Private		\$6,364,018		\$2,143,839	\$8,507,857
	Total	\$54,589,033	\$65,296,127	\$4,670,420	\$115,597,919	\$240,153,499
2010-2011	Federal	\$60,209,080	\$967,745	\$2,039,070	\$129,304,087	\$192,519,982
	State	\$3,596,156	\$35,998,448	\$1,905,188	\$397,263	\$41,897,055
	Institutional	\$1,071,352	\$28,981,179		\$38,000	\$30,090,531
	Private		\$6,245,312		\$2,453,456	\$8,698,768
	Total	\$64,876,588	\$72,192,683	\$3,944,258	\$132,192,806	\$273,206,336
2011-2012	Federal	\$59,166,778	\$681,536	\$2,576,022	\$142,698,527	\$205,122,863
	State	\$2,945,241	\$38,193,687	\$1,665,205	\$419,000	\$43,223,133
	Institutional	\$539,353	\$28,740,682	\$4,999	\$33,567	\$29,318,601
	Private		\$6,644,063		\$3,026,124	\$9,670,187
	Total	\$62,651,372	\$74,259,968	\$4,246,226	\$146,177,218	\$287,334,784

¹Campus descriptors were modified in 2011. See page vii for an explanation of changes.

²Jobs include Work Study, but do not include Institutional Student Employment.

Source: Financial Aid Extract Files, Office of Institutional Analytics

Financial Aid

Fall 2012 Financial Aid Recipients

Financial Aid by Ethnicity, Sex, and Level

Percentage of Students Receiving Financial Aid

Ethnicity	Main Campus ¹	UNM-Gallup	UNM-Los Alamos	UNM-Taos	UNM-Valencia
Hispanic	80.6%	66.0%	60.3%	54.7%	70.4%
African American/Black	82.7%	60.0%	72.7%	14.3%	82.4%
American Indian	81.9%	72.6%	78.9%	62.4%	81.3%
Asian	74.4%	41.7%	31.3%	33.3%	56.3%
Native Hawaiian	66.7%	71.4%	100.0%	66.7%	75.0%
White/non-Hispanic	71.7%	45.7%	34.9%	38.9%	70.9%
Two or more	83.1%	78.8%	64.3%	54.3%	70.6%
Non-Resident Alien	60.7%	22.2%	0.0%	0.0%	6.7%
No Response	66.7%	39.4%	47.4%	50.0%	34.4%
Total	75.8%	69.3%	49.0%	50.4%	69.5%
Sex					
Female	77.6%	71.0%	53.4%	52.7%	70.8%
Male	73.5%	66.2%	42.9%	46.8%	67.1%
Total	75.8%	69.3%	49.0%	50.4%	69.5%
Level					
Year 1: Freshman	91.1%	85.5%	69.4%	84.8%	87.6%
Year 2: Sophomore	86.0%	77.1%	67.3%	83.1%	82.0%
Year 3: Junior	84.1%	0.0%	0.0%	0.0%	0.0%
Year 4: Senior	78.5%	0.0%	0.0%	0.0%	0.0%
Non-Degree	5.1%	1.6%	2.4%	0.6%	3.4%
Masters	59.9%	0.0%	0.0%	0.0%	0.0%
Professional/Doctoral	79.8%	0.0%	0.0%	0.0%	0.0%
Total	75.8%	69.3%	49.0%	50.4%	69.5%

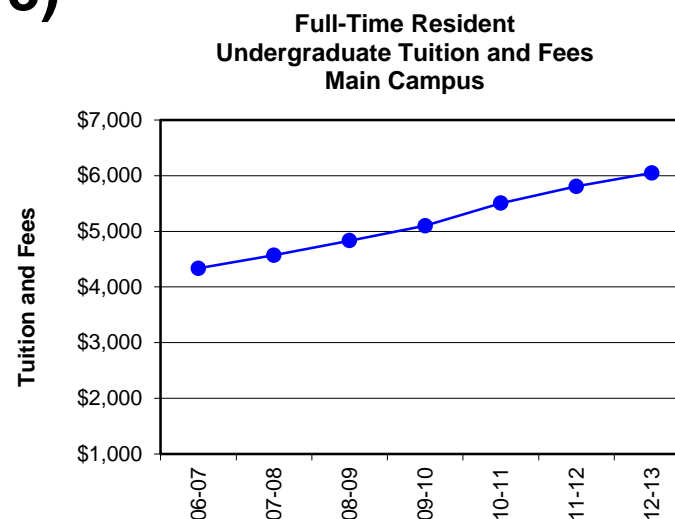
¹Campus descriptors were modified in 2011. See page vii for an explanation of changes.

Source: Fall 21-day enrollment files maintained by the Registrar's Office and Financial Aid Extract Files for 2012-2013

Full-Time Tuition & Fees¹

Main Campus² (2006-2007 to 2012-2013)

Year	Undergraduate		Graduate	
	Resident	Non-Resident	Resident	Non-Resident
06-07	\$4,335	\$14,177	\$4,765	\$14,574
07-08	\$4,571	\$14,942	\$5,023	\$15,361
08-09	\$4,834	\$15,708	\$5,306	\$16,141
09-10	\$5,101	\$17,254	\$5,597	\$17,733
10-11	\$5,506	\$18,691	\$6,041	\$19,207
11-12	\$5,809	\$19,919	\$6,381	\$20,469
12-13	\$6,049	\$20,688	\$6,642	\$21,258
% Increase Since 06-07	39.5%	45.9%	39.4%	45.9%



Year	Law		PharmD		Medicine		AGSM	
	Resident	Non-Resident	Resident	Non-Resident	Resident	Non-Resident	Resident	Non-Resident
06-07	\$9,566	\$23,213	\$11,159	\$25,868	\$13,331	\$38,194	\$6,031	\$15,840
07-08	\$10,561	\$24,467	\$11,552	\$27,056	\$13,995	\$40,101	\$6,358	\$16,696
08-09	\$11,593	\$25,693	\$12,152	\$24,355	\$14,671	\$42,043	\$7,906	\$18,745
09-10	\$12,619	\$28,235	\$12,785	\$31,220	\$15,402	\$44,143	\$8,326	\$20,590
10-11	\$13,660	\$30,604	\$16,685	\$36,688	\$16,170	\$46,347	\$9,602	\$22,910
11-12	\$14,532	\$32,661	\$17,769	\$39,173	\$16,170	\$46,347	\$10,190	\$24,432
12-13	\$15,098	\$33,908	\$18,457	\$40,662	\$16,170	\$46,347	\$10,450	\$25,221
% Increase Since 06-07	57.8%	46.1%	65.4%	57.2%	21.3%	21.3%	73.3%	59.2%

¹Fall & Spring Semesters are combined for tuition and fees. Differentials in tuition and fees may exist for some programs.

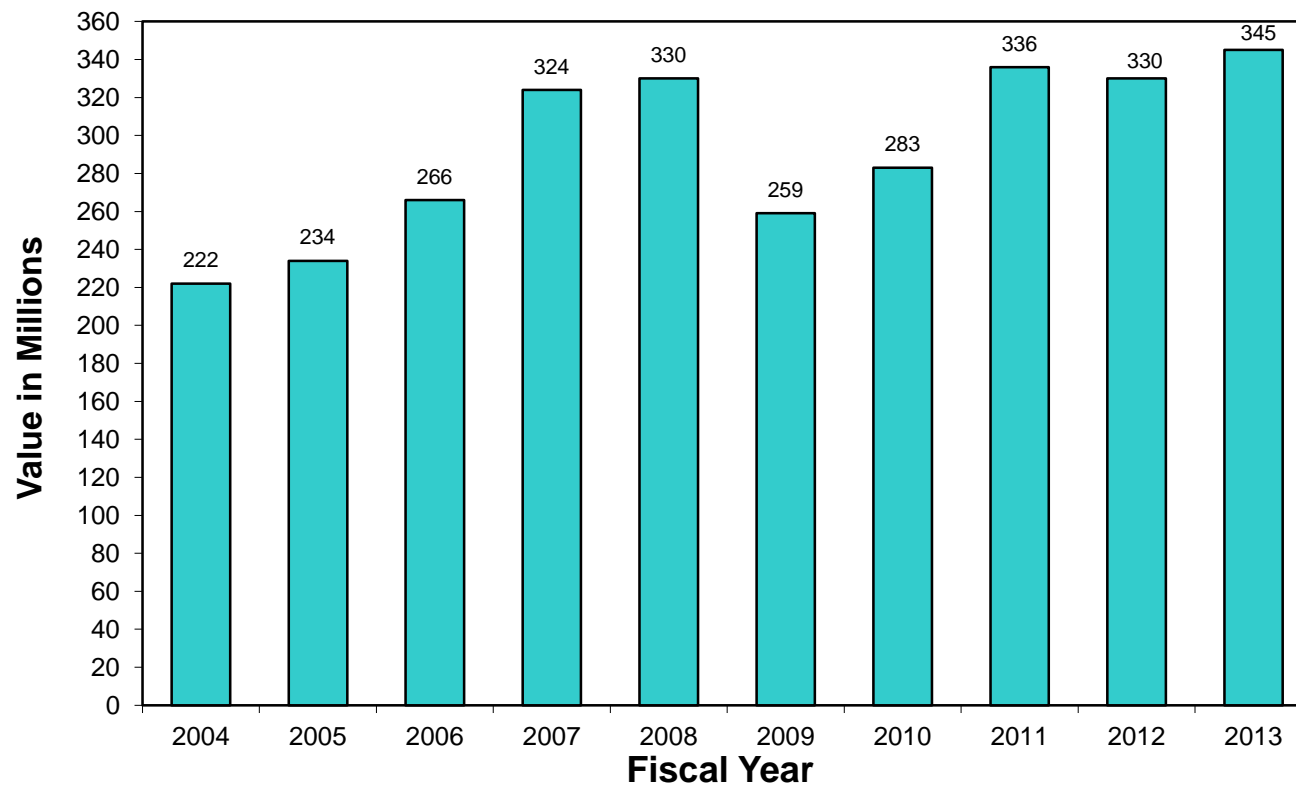
²Campus descriptors were modified in 2011. See page vii for an explanation of changes.

Source: UNM Office of Planning, Budget & Analysis

UNM Endowment Funds

Fiscal Years 2003 to 2013

**Consolidated Investment Fund (CIF)¹
(Long-term Permanent Endowment Investments)
Growth in Value
FY 2003 to 2013**



¹Includes combined UNM & UNM Foundation endowment funds, exclusive of the University's share of the State Permanent Fund. □

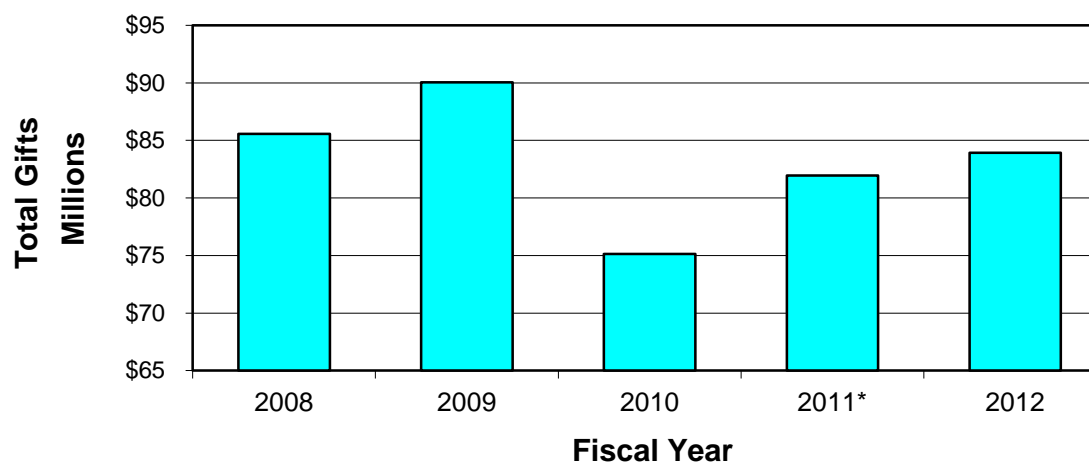
Source: UNM Foundation

Gift Activity¹

Fiscal Years 2008 to 2012

Gift Activity by Fiscal Year

University of New Mexico Foundation, Inc.



	2008	2009	2010	2011*	2012
Total Private Support	\$85,555,715	\$90,045,942	\$75,120,877	\$81,950,681	\$83,915,439

¹Includes gifts and bequests made to UNM Main, Branches, and the HSC.

*Amount changed from 2011 Fact Book by UNM Foundation

Source: UNM Foundation

UNM Facilities

As of October 2012



Dane Smith Hall

UNM Facilities by Campus

Campus	Acreage ³	Number of Buildings	Total Square Footage
Main Campus¹			
Central ²	212	179	6,081,916
North ²	279	94	3,666,298
South Campus ²	293	66	1,517,336
Subtotal	783	339	11,265,550
Gallup Campus	80	14	341,709
Los Alamos Campus	All land is leased	11	106,201
Valencia Campus	124	12	181,204
Taos Campus	80	39	117,207
UNM West @ Rio Rancho	206	1	39,167
Mesa Del Sol	440	1	26,560
Subtotal	930	78	812,048
Total UNM Facilities	1,713	417	12,077,598

¹Campus descriptors were modified in 2011. See page vii for an explanation of changes.

²The Central Campus includes buildings and acreage between Lomas and the south side of Central Avenue and also the area known as Lands West (Encino Plaza, Medical Arts); the North Campus includes buildings and acreage north of Lomas including UNMH; the South Campus includes the UNM Research Park and the Sports Complex.

³Approximation. Acreage data provided by Real Estate Department.

Source: UNM Planning and Campus Development

Capital Outlay Projects

Current Year Request (2013-2014)

	Estimated Project Cost	2013 State Appropriation Request	Previous Appropriation	Private Funds	Other Funds	Federal Funds
Institution - Statewide						
ADA Compliance (Recurring)	\$6,800,000	\$250,000	\$4,370,000	\$0	\$0	\$0
SUBTOTAL	\$6,800,000	\$250,000	\$4,370,000	\$0	\$0	\$0
Main Campus Academic						
Science & Math Learning Center - Phase II	\$6,000,000	\$6,000,000	\$0	\$0	\$0	\$0
Physics and Astronomy - Phase I	\$56,000,000	\$40,000,000	\$0	\$0	\$0	\$0
Farris Engineering Building Renovation	\$20,000,000	\$20,000,000	\$0	\$0	\$0	\$0
SUBTOTAL	\$82,000,000	\$66,000,000	\$0	\$0	\$0	\$0
Health Sciences Center						
Health Education Building -- Phase III	\$29,750,000	\$29,750,000	\$0	\$0	\$0	\$0
Carrie Tingley Ambulatory Center	\$40,000,000	\$20,000,000	\$0	\$0	\$20,000,000	\$0
CDD Autism Center	\$30,000,000	\$30,000,000	\$0	\$0	\$0	\$0
SUBTOTAL	\$99,750,000	\$79,750,000	\$0	\$0	\$20,000,000	\$0
Infrastructure						
Science & Technology Park IT Infrastructure Upgrades - Phase I	\$4,400,000	\$956,226	\$0	\$0	\$0	\$0
Electrical Distribution	\$2,000,000	\$2,000,000	\$0	\$0	\$0	\$0
IT Electrical Upgrades	\$2,200,000	\$2,200,000	\$0	\$0	\$0	\$0
SUBTOTAL	\$8,600,000	\$5,156,226	\$0	\$0	\$0	\$0

Source: Office of Planning, Budget & Analysis

Capital Outlay Projects

Current Year Request (2013-2014)

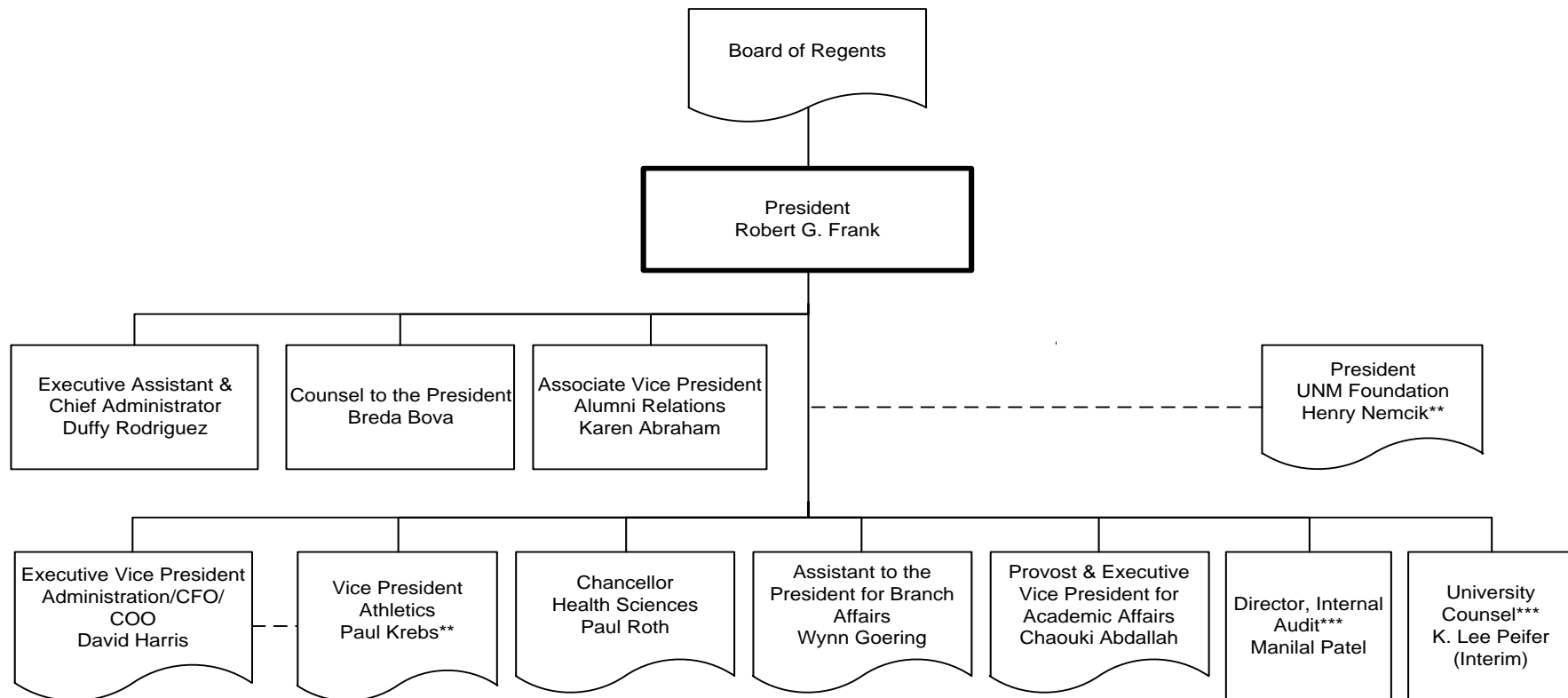
	Estimated Project Cost	2013 State Appropriation Request	Previous Appropriation	Private Funds	Other Funds	Federal Funds
Athletics						
Improvements to Parking Lots/ Landscaping -- Phase II	\$5,000,000	\$1,500,000	\$550,000	\$0	\$0	\$0
SUBTOTAL	\$5,000,000	\$1,500,000	\$550,000	\$0	\$0	\$0
Branch Campuses						
Gallup:						
Infrastructure & Fire Suppression Phase II	\$2,000,000	\$1,760,000	\$0	\$0	\$240,000	\$0
Carreer Education Class Lab Remodel	\$1,500,000	\$1,320,000	\$0	\$0	\$180,000	\$0
Los Alamos:						
Science Labs Renovation - Final Phase	\$750,000	\$750,000	\$0	\$0	\$0	\$0
Classroom & Faculty Office Renovation (Bldg 6)	\$1,500,000	\$1,125,000	\$0	\$0	\$375,000	\$0
Taos:						
Core Student Success Center	\$4,320,000	\$3,888,000	\$0	\$0	\$432,000	\$0
Hardwood Exterior Repairs	\$589,000	\$589,000	\$0	\$0	\$0	\$0
Valencia:						
No Request	\$0	\$0	\$0	\$0	\$0	\$0
SUBTOTAL	\$10,659,000	\$9,432,000	\$0	\$0	\$1,227,000	\$0
TOTAL	R3	\$162,088,226	\$4,920,000	\$0	\$21,227,000	\$0

Source: Office of Planning, Budget & Analysis

UNM Organizational Structure, 2012-13

President's Direct Reports

2012-2013 Organizational Structure*



*As of December 2012

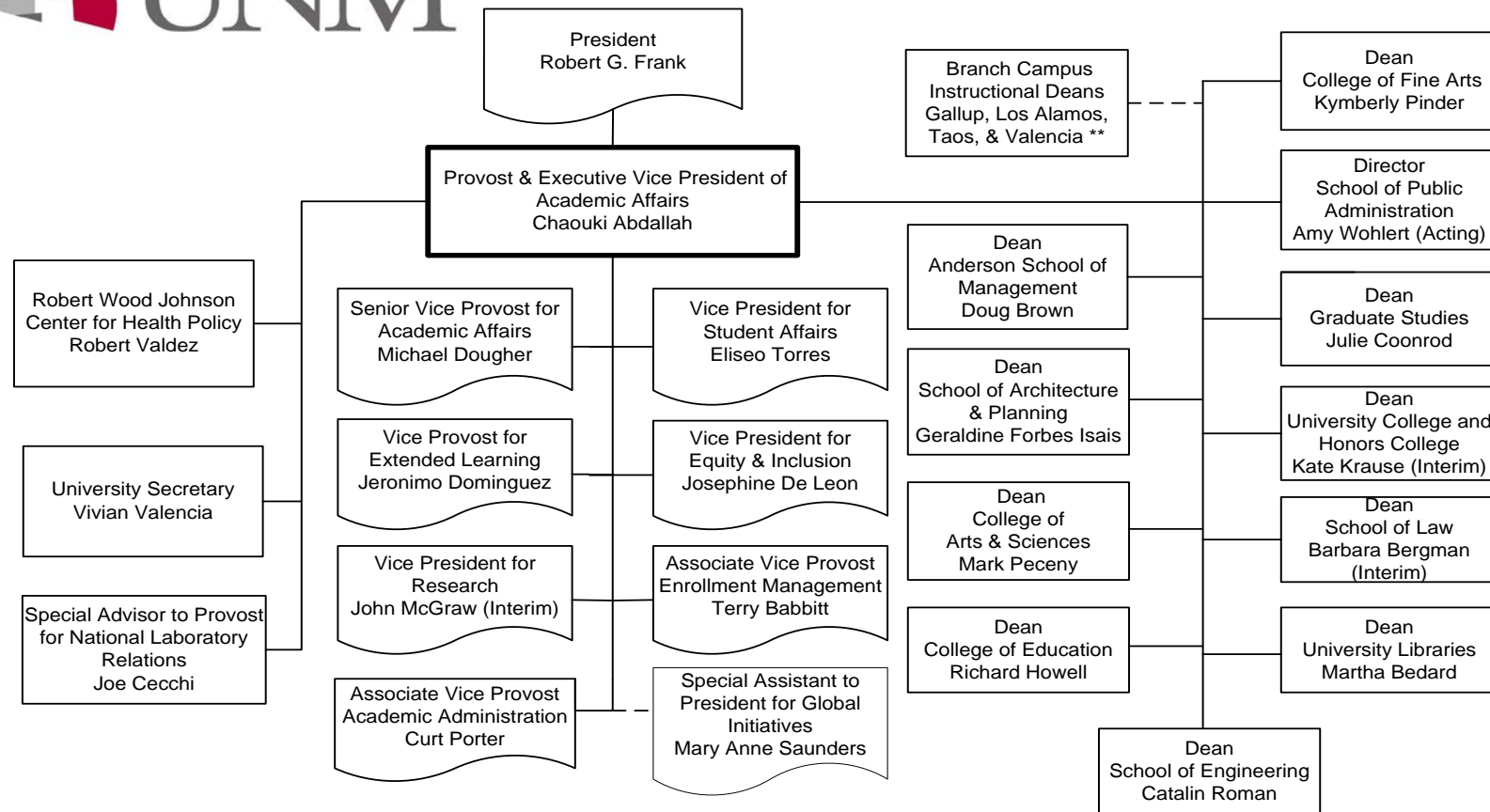
**Dual reporting roles

***Dual reporting roles to Board of Regents

Source: UNM Office of the President

Provost & Executive Vice President for Academic Affairs

2012-2013 Organizational Structure*



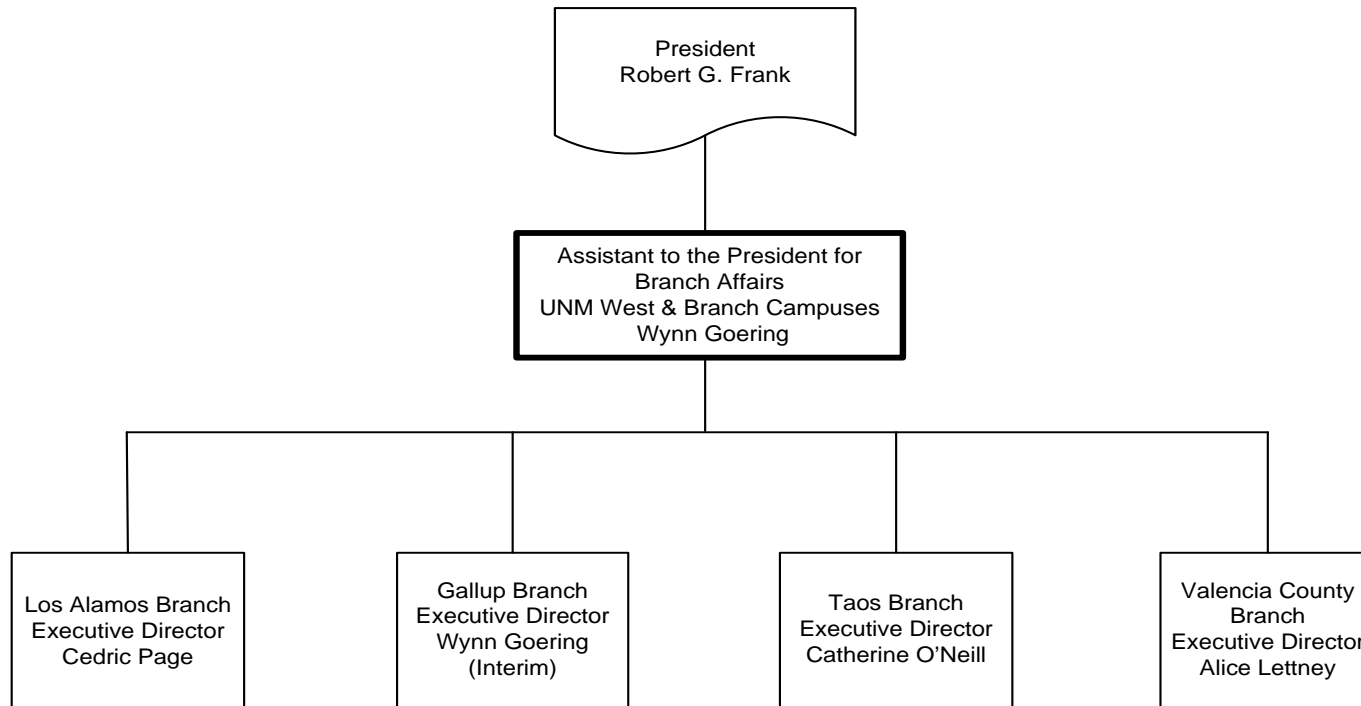
*As of December 2012

**Dual reporting roles

Source: UNM Office of the Provost

Branch Campus Directors

2012-2013 Organizational Structure*

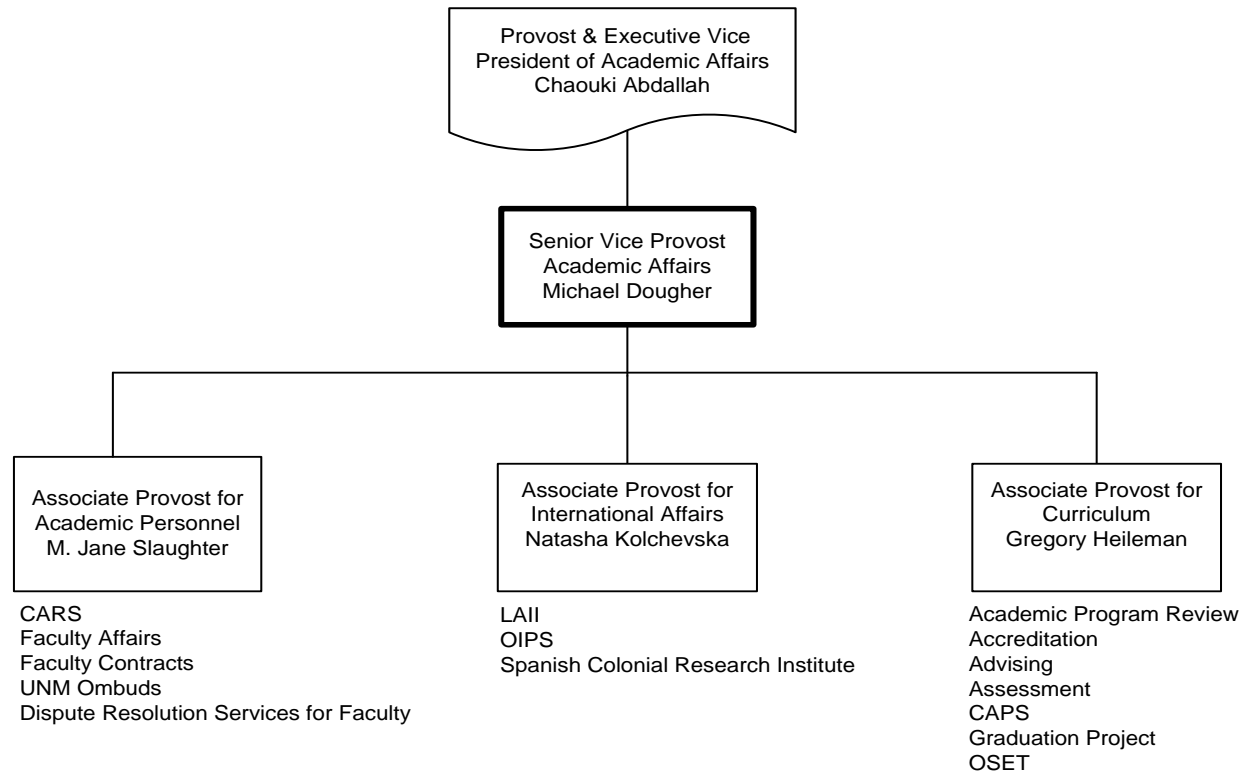


*As of December 2012

Source: UNM Office of the President

Senior Vice Provost for Academic Affairs

2012-2013 Organizational Structure*

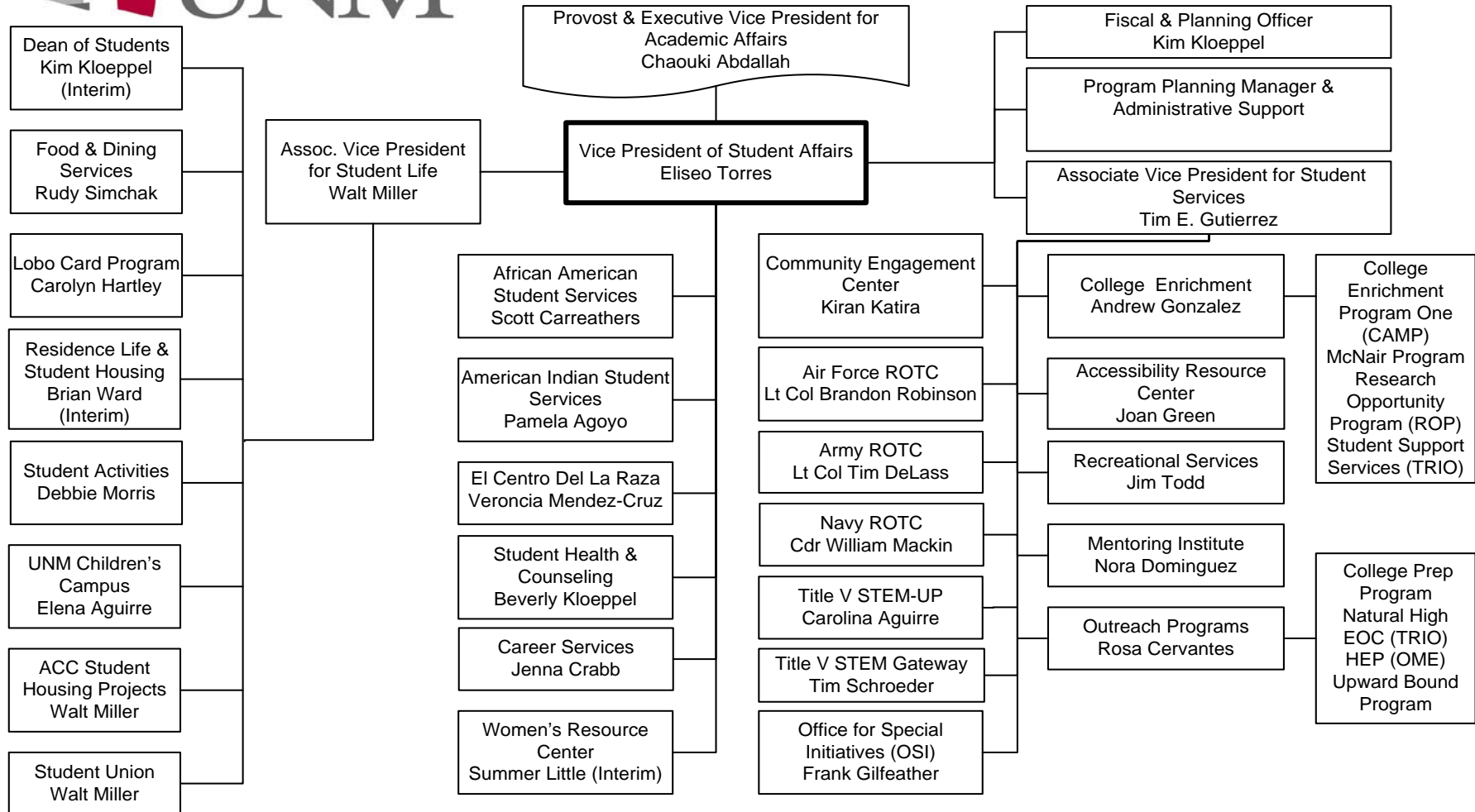


*As of December 2012

Source: UNM Office of the Provost

Vice President for Student Affairs

2012-2013 Organizational Structure*

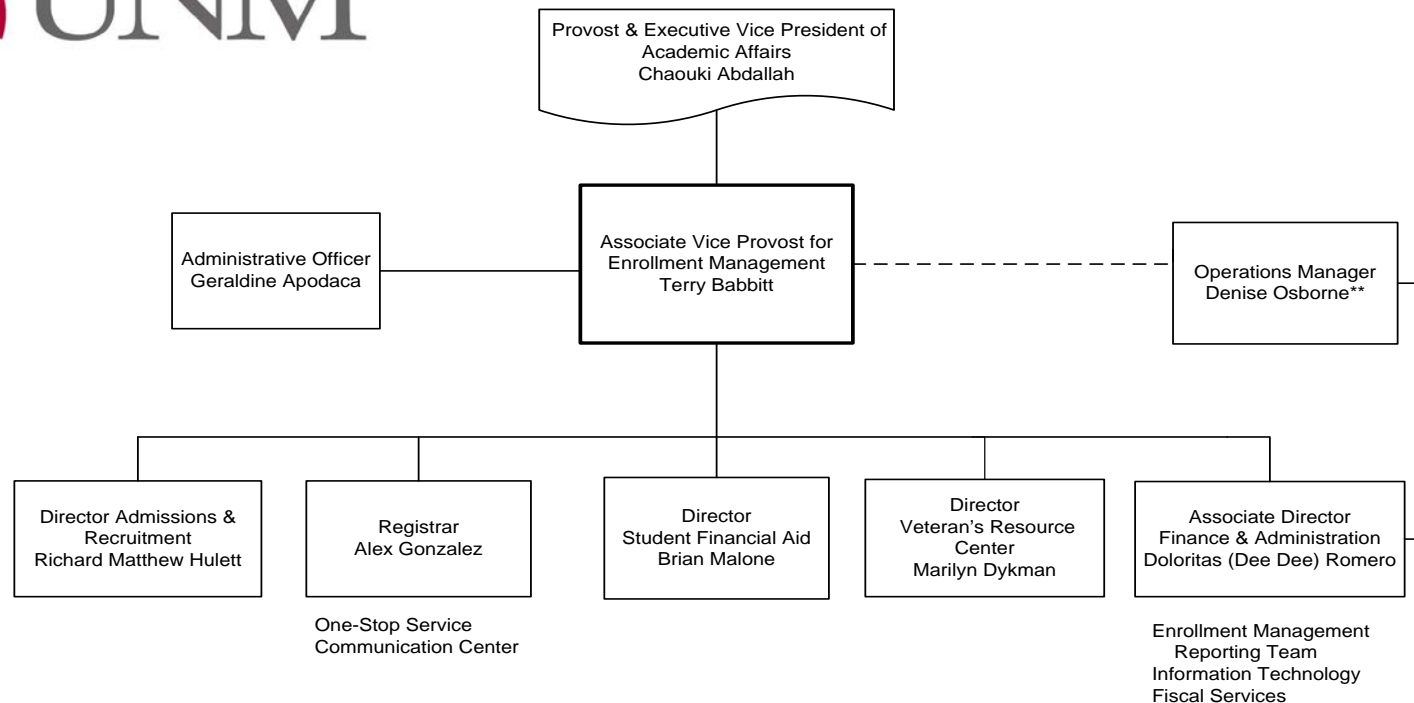


*As of December 2012

Source: UNM Office of the Vice President for Student Affairs

Associate Vice Provost for Enrollment Management

2012-2013 Organizational Structure*



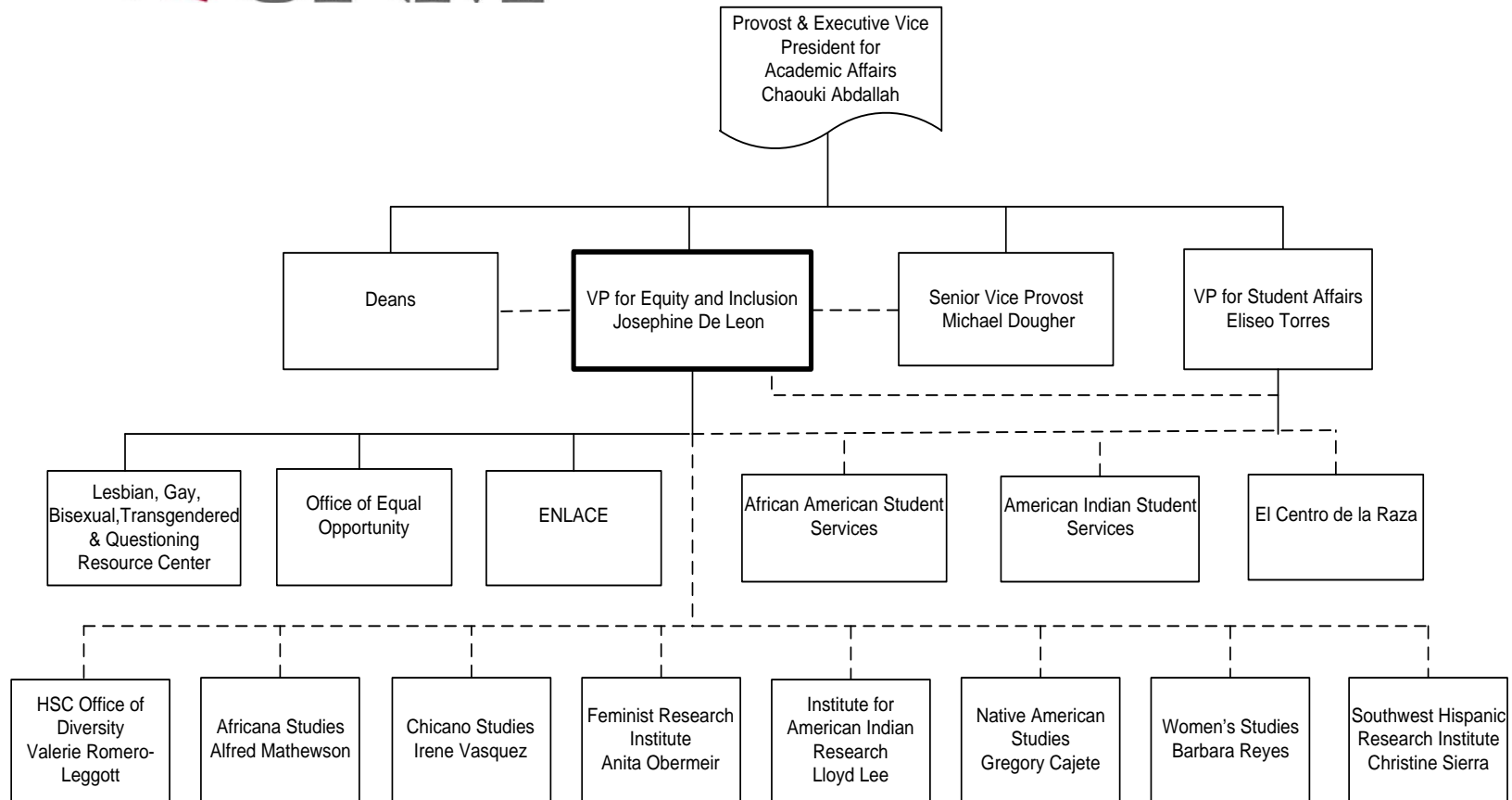
*As of December 2012

**Dual reporting role

Source: UNM Office of the Associate Vice Provost for Enrollment Management

Vice President for Equity and Inclusion

2012-2013 Organizational Structure*



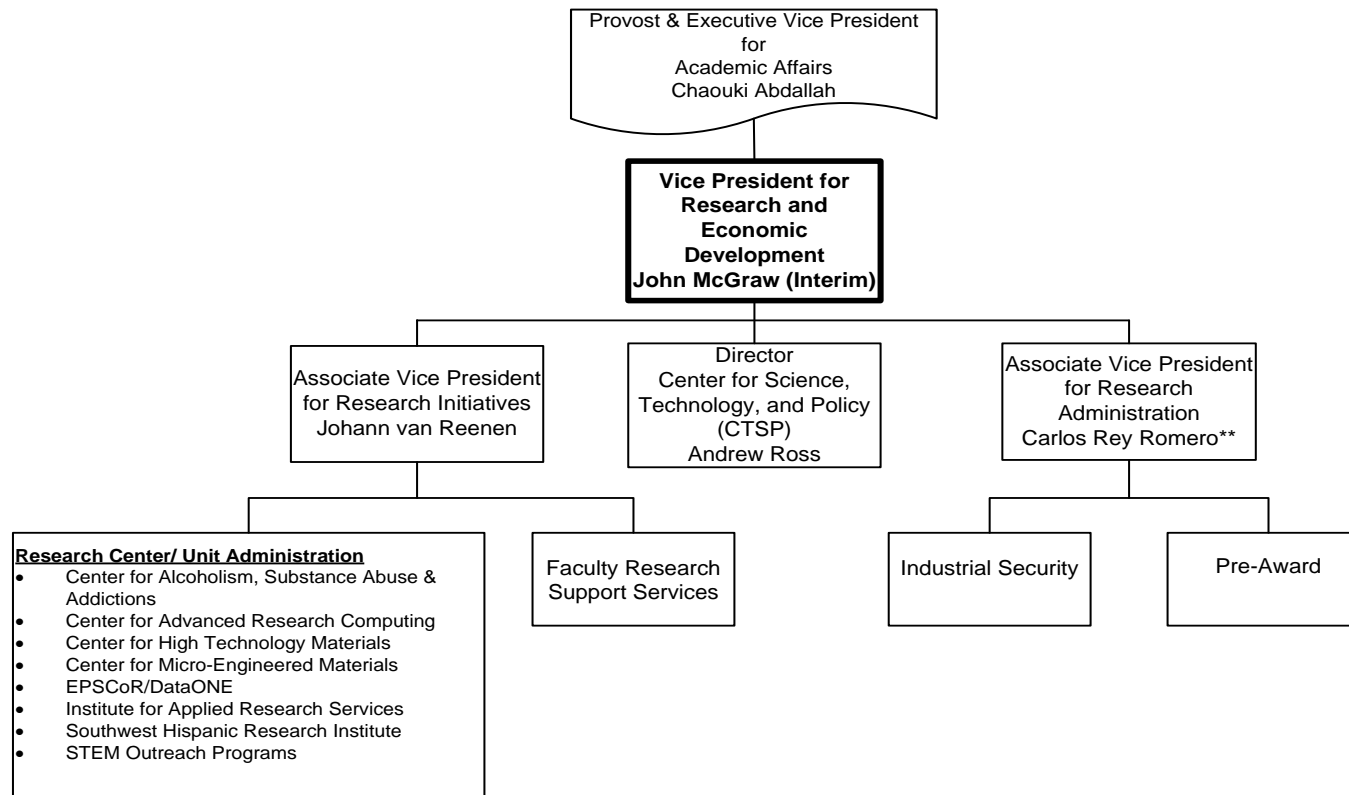
*As of December 2012

Note: The dotted lines indicate collaborative partnerships with other major units which are critical for meeting the diversity goals of the University.

Source: UNM Vice President for Equity and Inclusion Office

Vice President for Research & Economic Development

2012-2013 Organizational Structure*



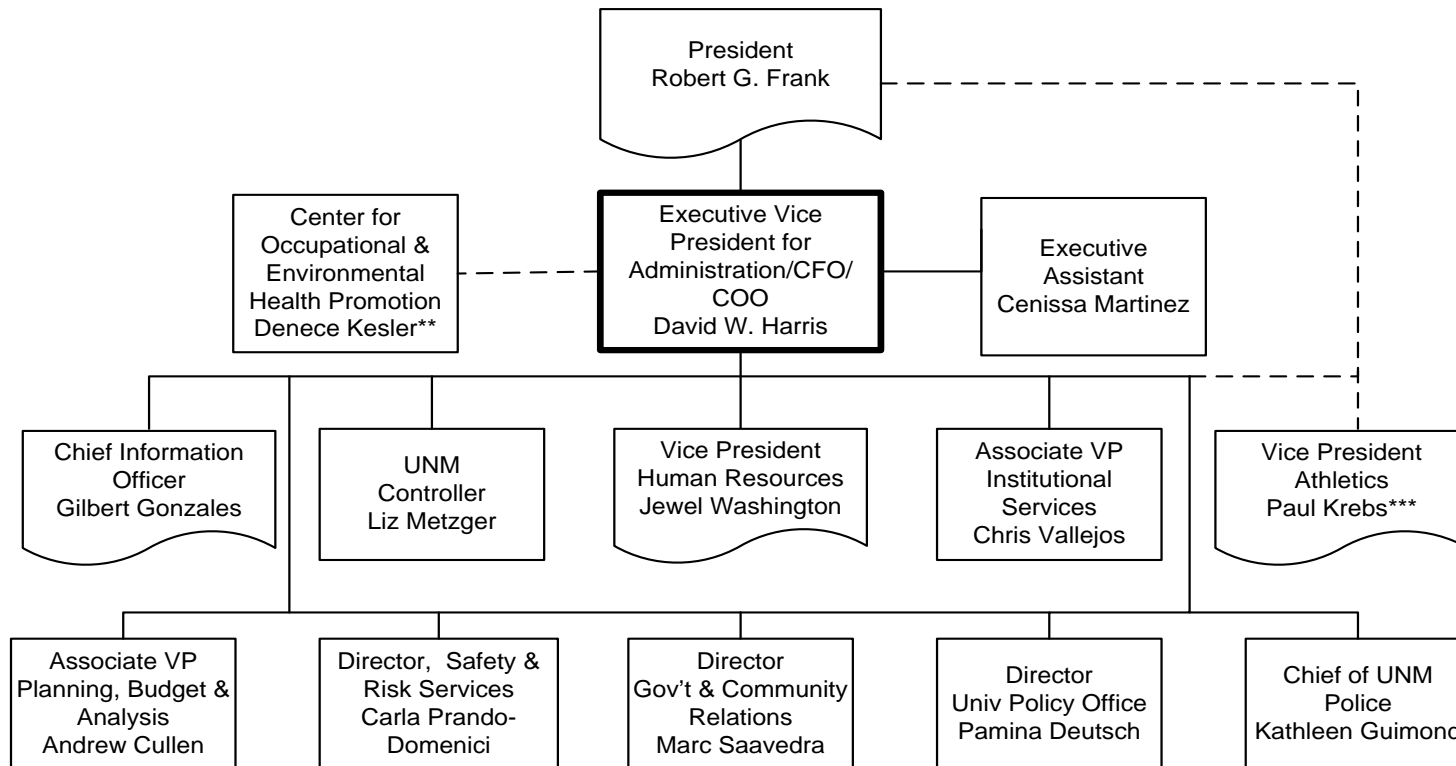
*As of December 2012

**Dual report to VP of Research and UNM Finance and Controller

Source: UNM Office of the Vice President for Research & Economic Development

Executive Vice President for Administration

2012-2013 Organizational Structure*



*As of March 2013

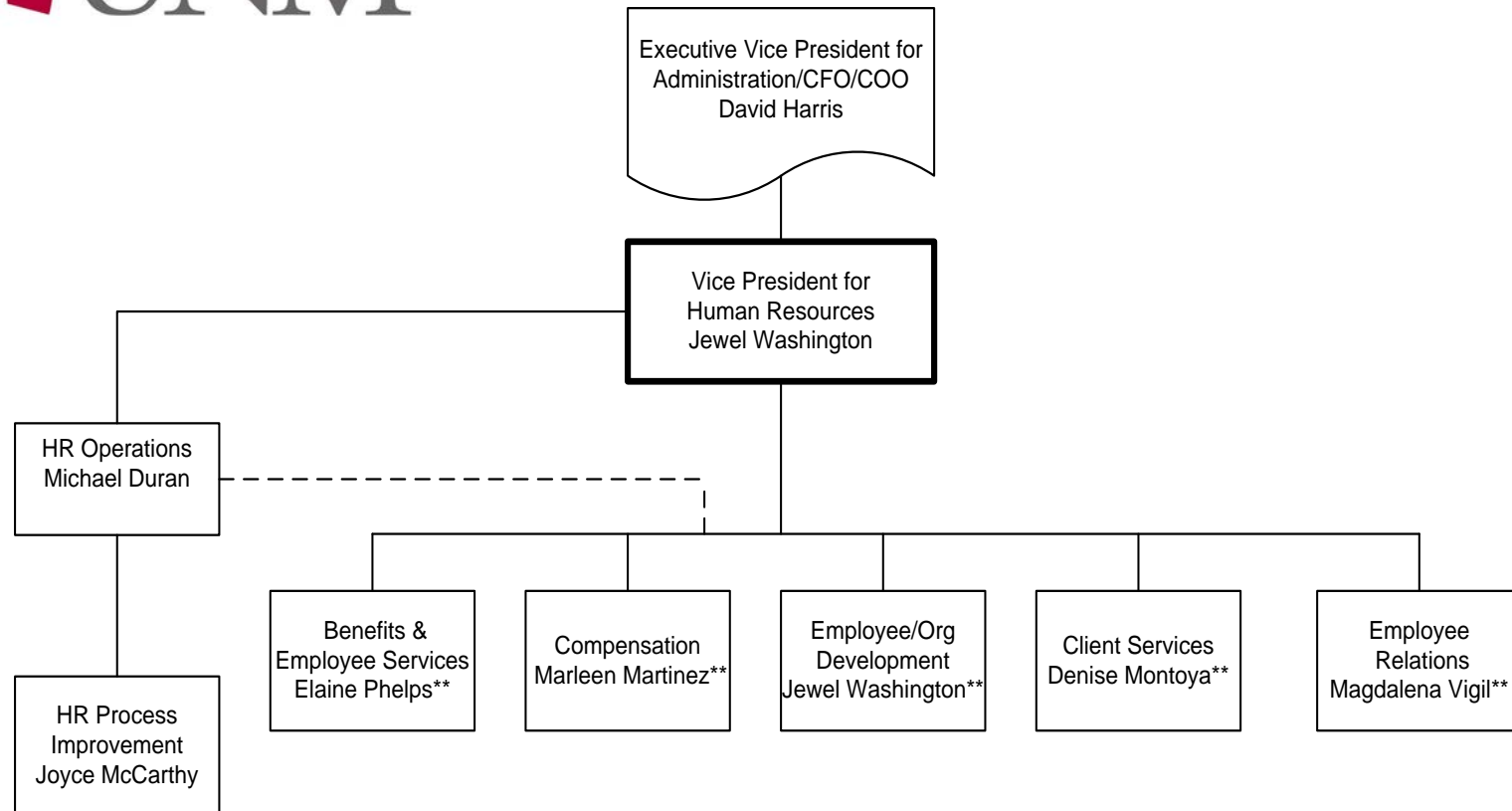
**Position has reporting roles to the EVP for Administration and the EVP for Health Sciences

***Position has reporting roles to the EVP for Administration and the President

Source: UNM Office of the Executive Vice President for Administration

Vice President for Human Resources

2012-2013 Organizational Structure*



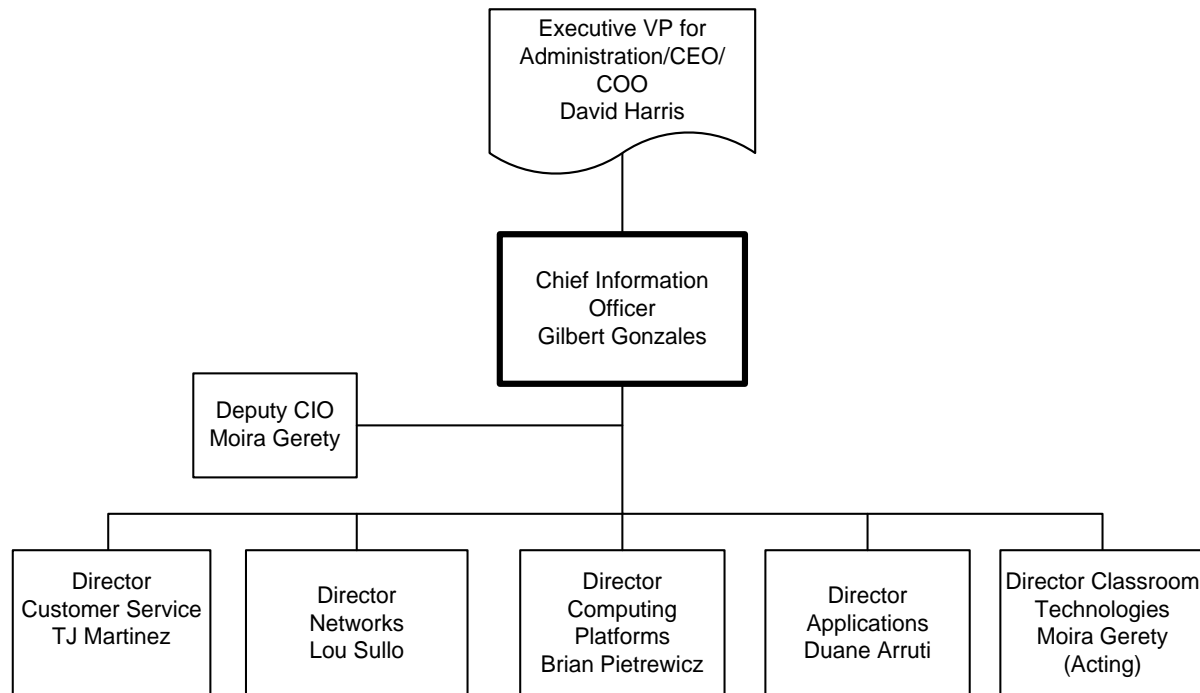
*As of March 2013

**Dual reporting roles

Source: UNM Office of the Vice President for Human Resources

Chief Information Officer

2012-2013 Organizational Structure*

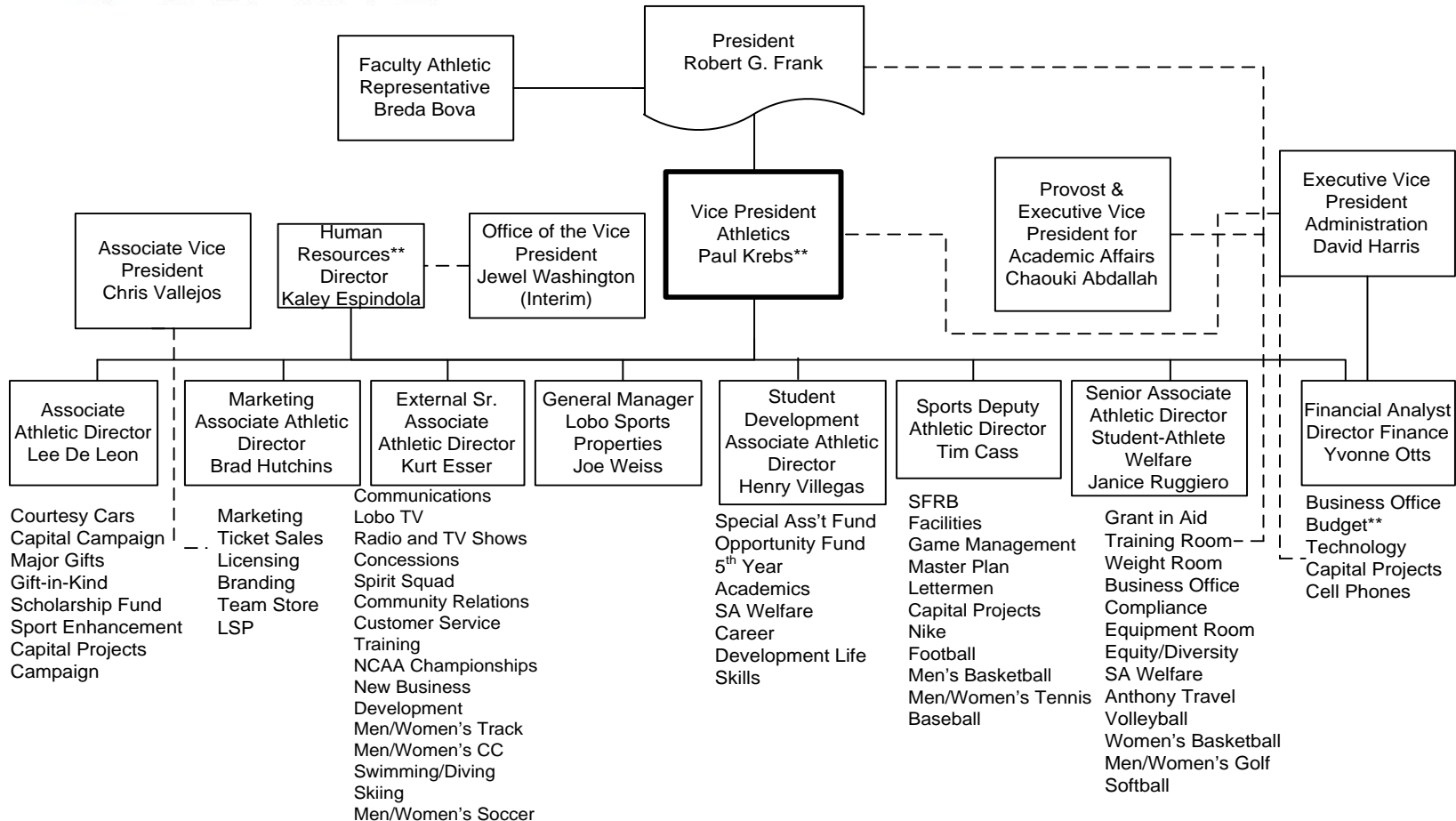


*As of December 2012

Source: UNM Office of the Chief Information Officer

Vice President of Athletics

2012-2013 Organizational Structure*



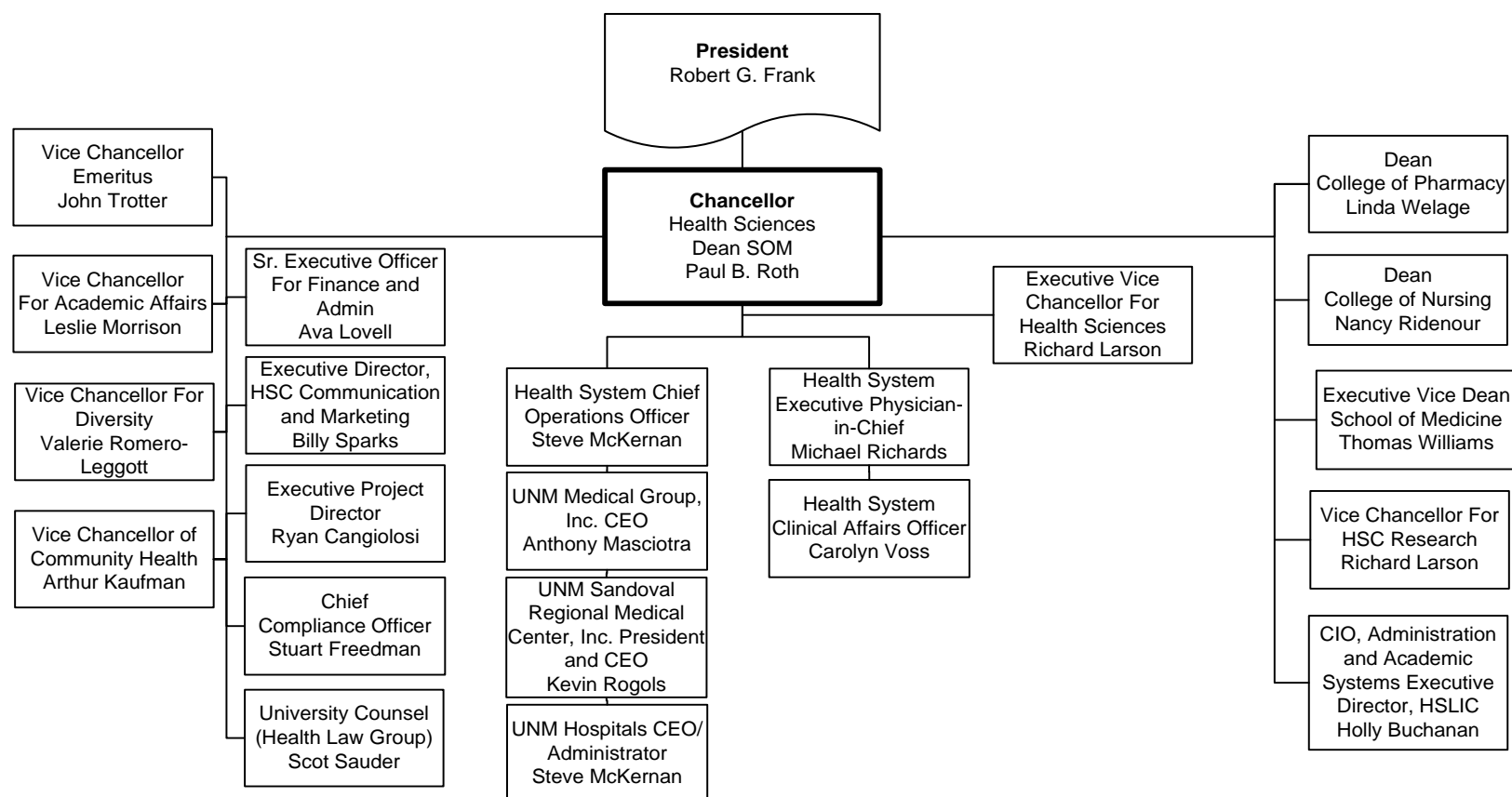
*As of December 2012

**Dual Reporting Role

Source: UNM Office of the Vice President for Athletics

Chancellor for Health Sciences

2012-2013 Organizational Structure*

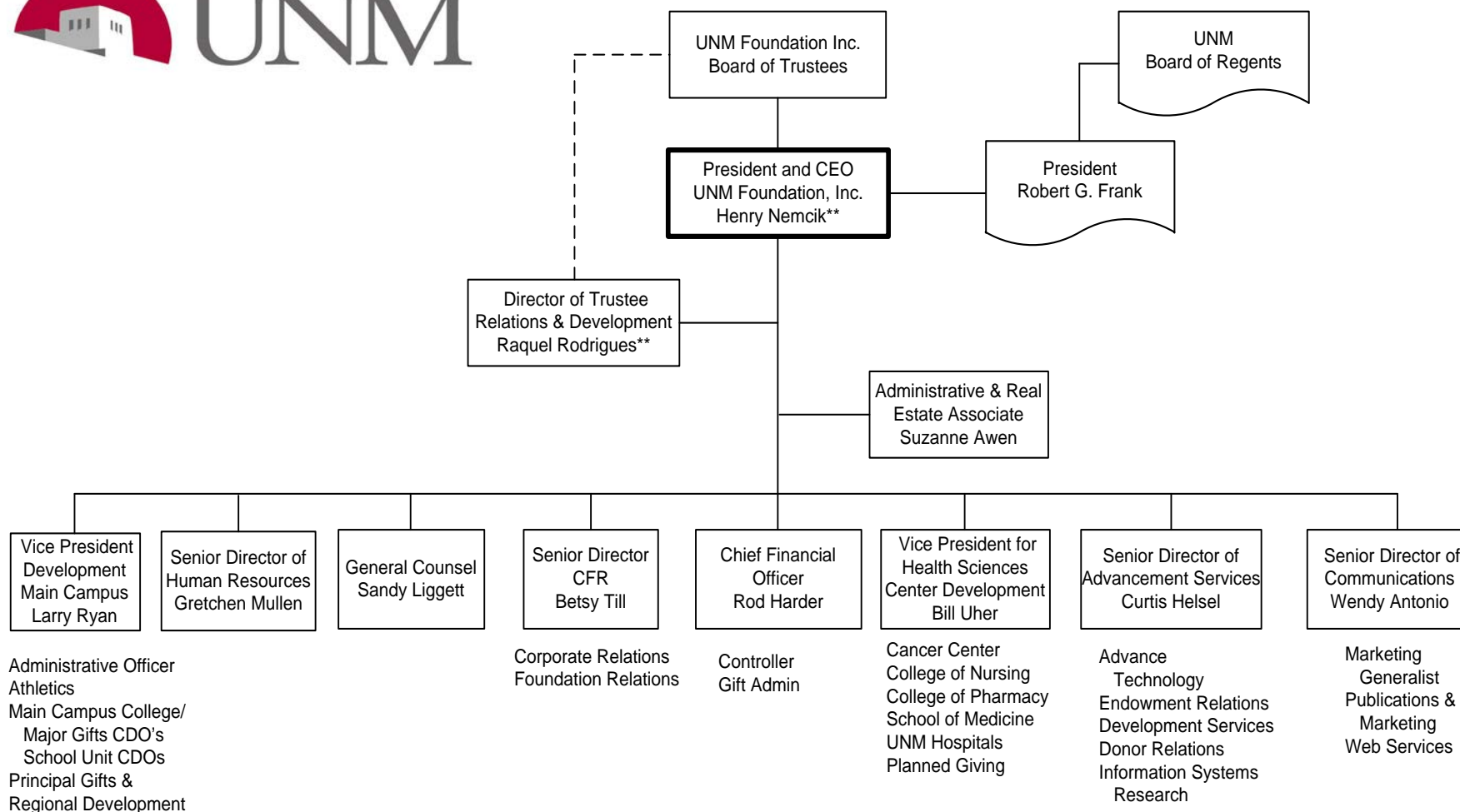


*As of December 2012

Source: UNM Office of the Chancellor for Health Sciences

UNM Foundation, Inc.

2012-2013 Organizational Structure*



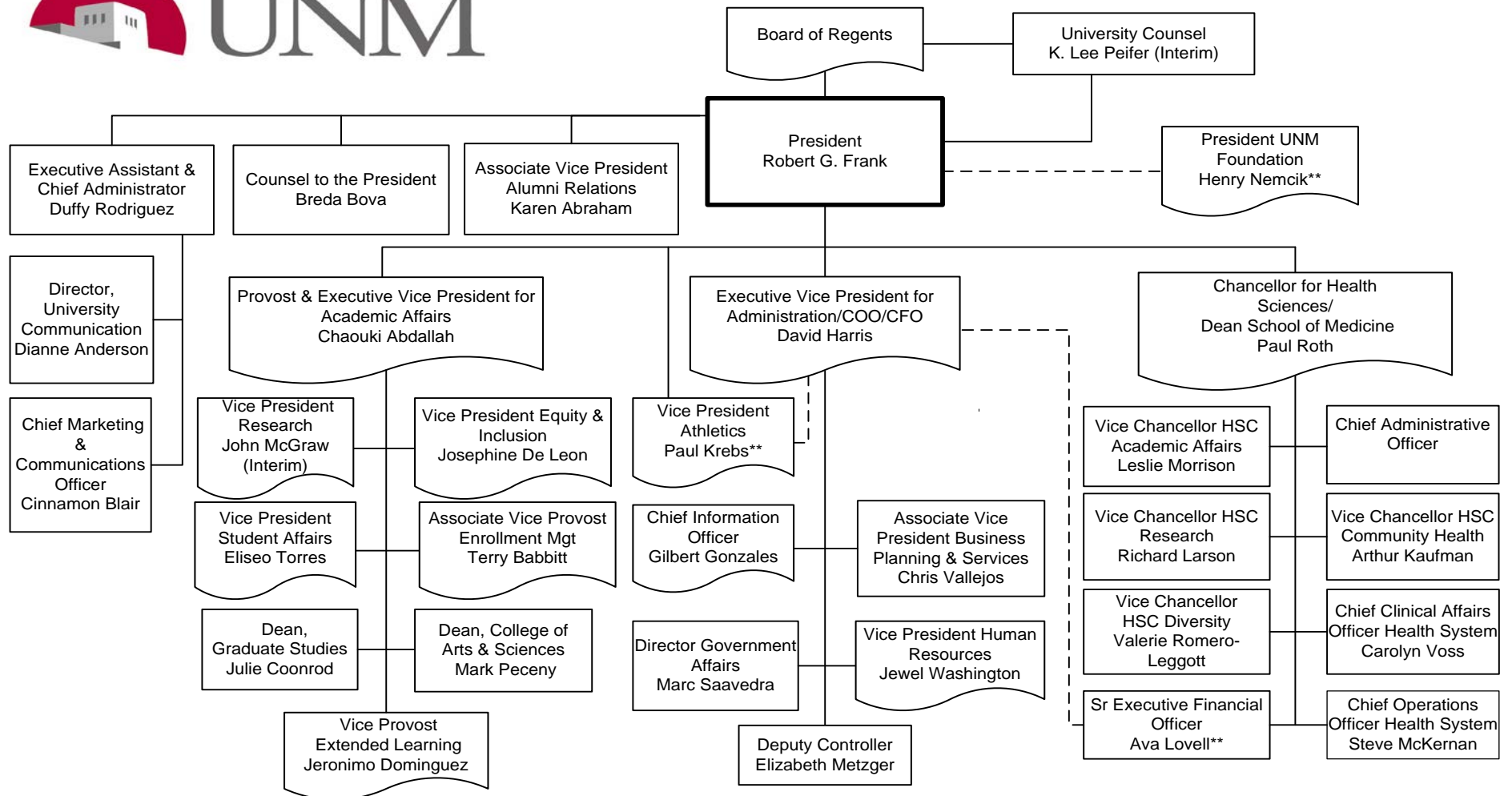
*As of December 2012

**Dual reporting roles

Source: UNM Foundation Inc.

Executive Cabinet

2012-2013 Organizational Structure*



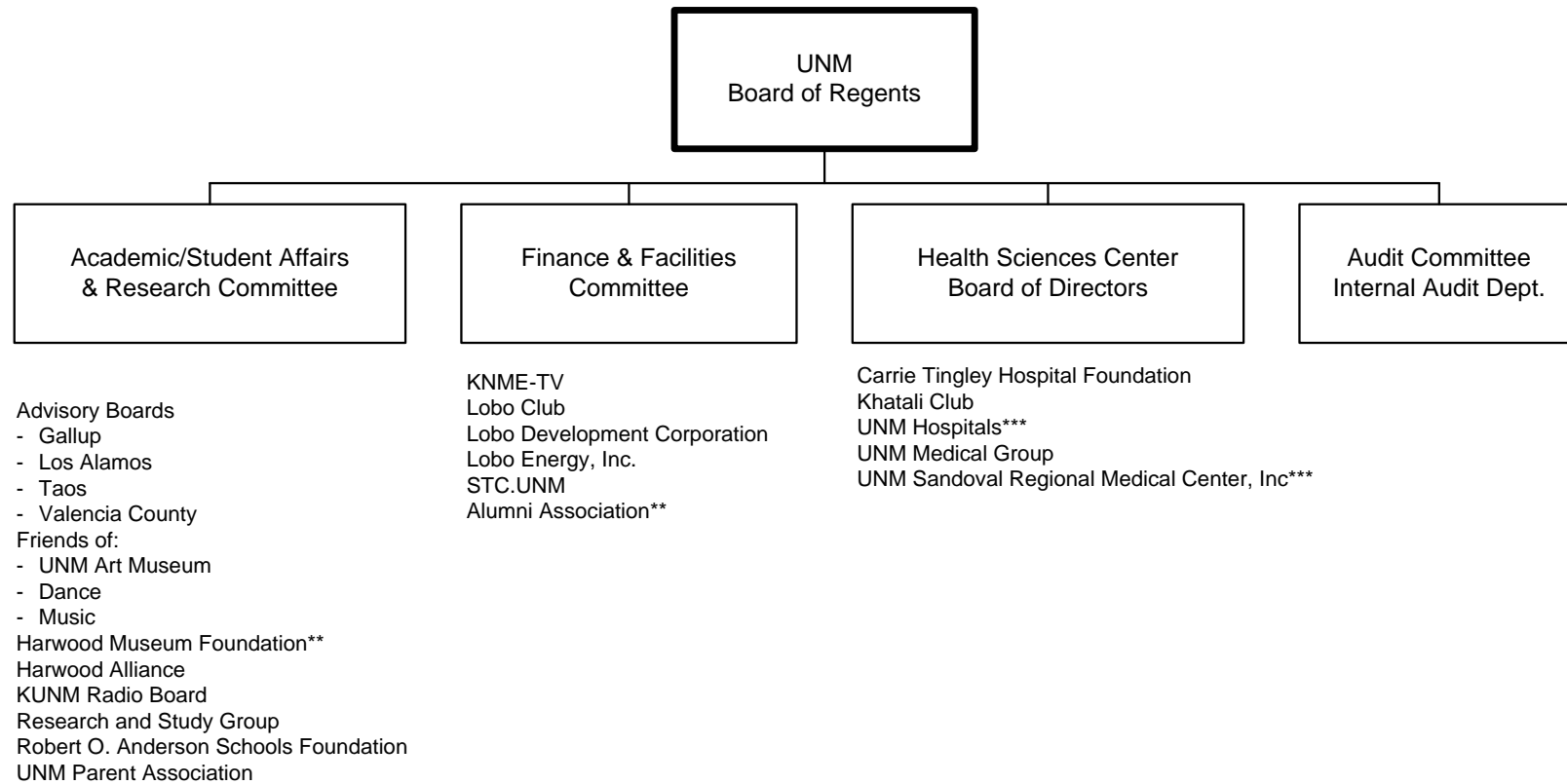
*As of March 2013

**Dual reporting roles

Source: Office of the President

UNM Board of Regents Committees

2012-2013 Organizational Structure*



* As of December 2012

** Indicates reporting line to President

*** Indicates "as member"

Source: UNM Office for the Board of Regents